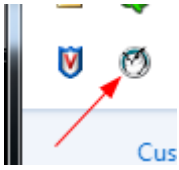


Faronics Insight User Guide

The use model for Insight is quite similar to previous versions. On the teacher computer, you will see a small Faronics Insight icon (that looks like a small green circle of circles) in the system tray. The system tray is located in the bottom right corner of your computer screen.



You will use this menu to control the key features of Faronics Insight.

More advanced features are available when you access the Faronics Insight Teacher console. The console can be accessed by "left clicking" on the Faronics Insight system tray icon or dock icon or launching it from the Start menu.

In the console the key features are available as icons on the toolbar. All of the features can be accessed through the menus. It is also possible to right mouse click on computer thumbnails to access the key features.

When selecting computer thumbnails, we recommend using *ctrl-a* to select all computers or hold down the *ctrl* key and click with your mouse to select a group of computers. On the Mac use *command-a* to select all computers. In the thumbnail view you can select multiple computers by just selecting them with the mouse.

When using the toolbar buttons, a single click enables that feature and presses the button. Another click will disable that feature, just like a toggle switch.

It is possible to have multiple Teacher consoles monitor the same classroom. However, only the first Teacher's action on a computer will take effect and only that Teacher console can stop the action. For example, if a teacher blanks the student's screens, another teacher cannot unblank the student's screens.

About the Student computers

Faronics Insight is set up to run in the background on student computers. Students will automatically be discovered by the teacher on their channel, provided that the network is functioning properly and the appropriate selections have been made in the Network tab for Multicast or IP-Directed Broadcast configuration.

Faronics Insight Student Icon

A Faronics Insight icon (green circle of circles) appears in the system tray at the bottom right corner of the computer screen in Windows. On the Mac it appears as a small icon at the top of the screen. If you place your cursor over the icon, it will tell you which teacher channel the computer is on.

If a student single clicks on this icon they can request help from the teacher. The student can type a question and a small question mark is displayed in the teacher console indicating that student has a question. The question mark goes away when the teacher chats with the student or uses the menu item *Clear Student Question*.

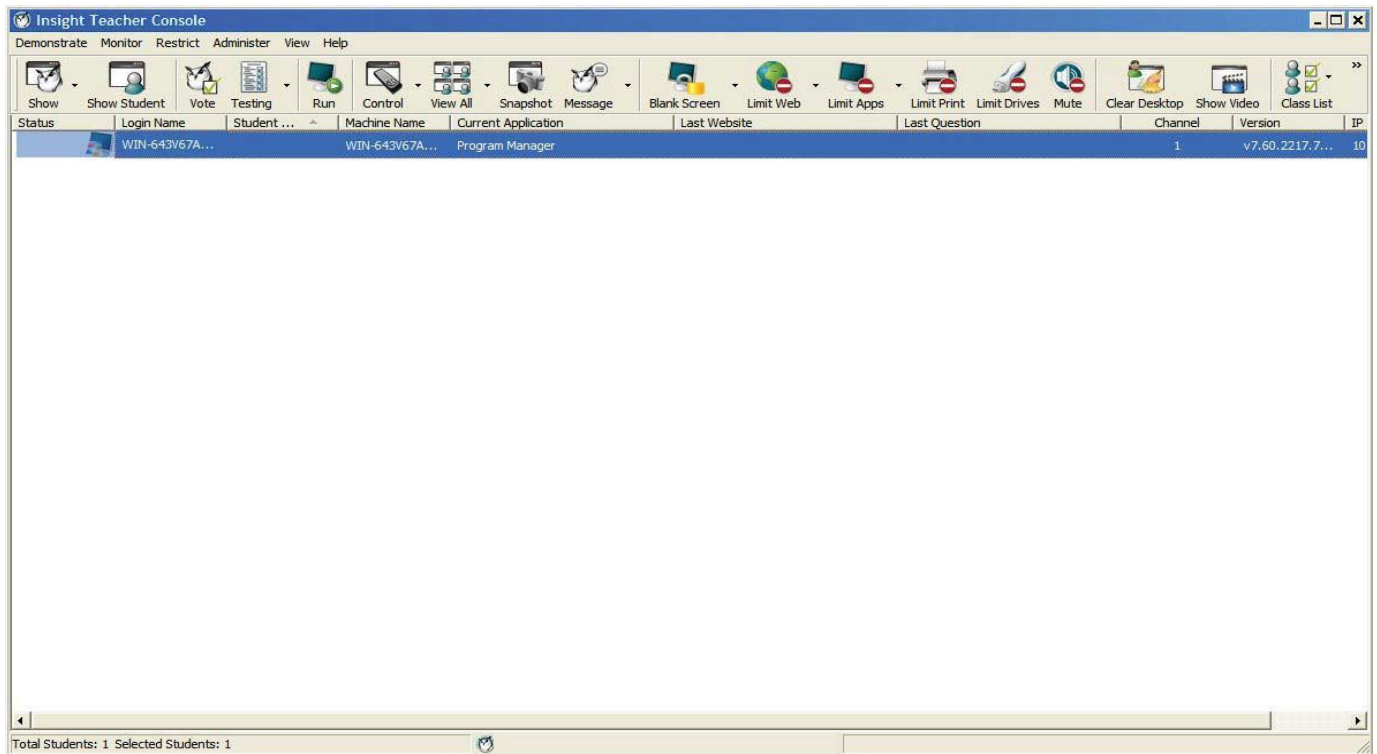
If a student right clicks on this icon, it will bring up the student file folder where the Send/Collect files feature sends files.

NOTE: If you selected the option to allow students to change their channel during the installation of the Faronics Insight Student application, the students will have a menu option to select a channel they wish to join.

User Interface Tips

Faronics Insight was designed to be simple and easy-to-use. Most of the features are accessible from the Faronics Insight system tray menu or dock icon. The more advanced features are available in the Faronics Insight Teacher console.

All of the features are grouped under one of five menu items: Demonstrate, Monitor, Restrict, Administer, and View.



Faronics Insight Toolbar Buttons

To use a feature in Faronics Insight, select the individual student or students and press the Faronics Insight Toolbar button that corresponds to the feature that you want to use. At that point the button will depress and change to a lighter color. To stop using that feature, click the button again.

Some of the Faronics Insight Toolbar Buttons have a little arrow to the right of the button. Click on the button to access additional options for that feature.

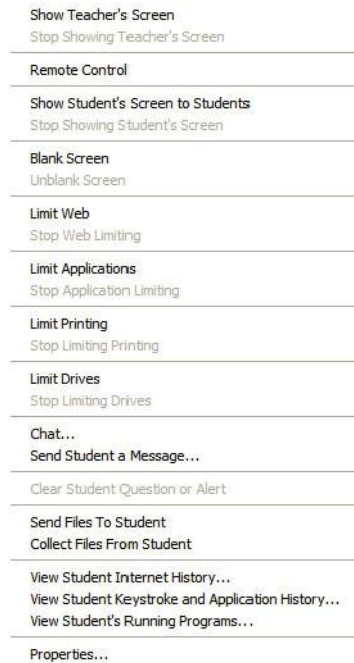
Buttons can be added, removed or moved by click on *View* then *Configure Toolbar* on a PC or *Customize Toolbar* on a Mac, though not in the new Windows Multipoint Server (WMS) Teacher. This version of the Teacher can be accessed by a very similar toolbar within the Multipoint Manager console. However, this toolbar provides a drop down list to select features, and does not behave as a toggle switch.

Activating Web and Application Limiting

Web and Application limiting must be configured before they can be activated. You may configure these features in the preferences menu and then turn them on through the menus or the toolbar buttons.

Right-mouse click

In the Faronics Insight Teacher console you can access advanced features by right-mouse clicking on a student computer in either the Details or Thumbnail view.



Multiple Select

It is possible to select one, several or all students.

To select multiple students, use the standard Windows *ctrl* click method. You can also select the entire list with the *ctrl-a* key sequence. On the Mac use *command-a* to select all computers.

In the details view, the line will turn blue when selected. In the thumbnail view, the thumbnail will have a thick red line surrounding it. It is not necessary to use the Windows *ctrl* click in the thumbnail view. In the thumbnail view you can select multiple thumbnails by clicking on another thumbnail.

Once you have selected the desired students, you can right-click on the selected students and get an advanced options menu, click on the toolbar button or console menu.

Unselect Students

To unselect students, click on a blank area of the console.

Note: If using the new Windows Multipoint Server Teacher from within the Multipoint Manager console, the same features and interaction is possible

Implicit ALL Selection

If no students are selected, there is an implied all selection when activating key features like Blank Screens or Show Teacher. For example, if no students are selected you can click the blank screens toolbar button and all of the student screens will be blanked.

Refresh Screen

Pressing F5 on a PC or *command-r* on a Mac or the menu item *View -> Refresh* will refresh the console by initiating a re-discovery of student computers on the channel.

Sorting

By default, the detail view is sorted alphabetically by the *Login Name* column. If you click on the any of the other column headings, the list will sort on the selected column.

Faronics Insight System Tray Menu or Dock Icon Menu

A right mouse click on the Faronics Insight icon in the system tray or dock icon will bring up a menu that contains the features that most teachers use every day.

A left mouse click on the system tray icon will stop the action that you are doing to the students and bring up the Faronics Insight Teacher console.

Hotkey for the Faronics Insight Menu

Some Teacher PCs do NOT have a visible task bar. Since it would not be possible to click on the non-visible icon, you can bring up the Faronics Insight Teacher's menu with a *ctrl+alt+l*. (The "l" stands for Faronics Insight)

Selected Only

In thumbnail view you can just watch a few machines by selecting those machines and pressing the *Selected Only* menu beneath the arrow on the *View All* button.

Classroom Layout

Classroom Layout allows you to arrange the thumbnails in the shape of the classroom. A classroom layout is automatically saved for each size of thumbnails. To switch to a classroom layout view, click the arrow to the right of the *View All* button and select *Classroom Layout*.

Snap to Grid makes it easier to align thumbnails when in Classroom Layout view. Lock Layout, makes sure the layout stays the same once you've set it.

Note: Classroom Layout is not an available feature in the WMS teacher.

Show Tooltips

Show Tooltips will either Show or Disable tooltips in the thumbnail view.

Magnify Thumbnails

The magnify menu on the *View All* button turns on or off the ability to hover over a thumbnail and have it expand temporarily to a larger size.

Insight includes many new features but was designed to remain simple and easy-to-use. Here's a list of new features included in this release, which are available in the Windows, Mac and WMS teacher.

Blank Screen before Login

You may now blank student screens before students login to their device, and display a configurable message in the student screen. The same menu item Blank Screen is selected, however not it will be applied to all students in the list even if they are logged out.

Show Teacher screen before Login

You may also choose to Show Teacher before some or all students have logged in. When Show Teacher is selected, it will be applied to all students in the list even in they are logged out. In this case, Show Teacher is displayed in "Full Screen" mode only, meaning that students do not have control of their mouse and keyboard inputs, allowing teachers to immediately begin teaching a lesson, without needing to wait for students to first enter their login credentials.

Screen Feed view

Like a PowerPoint slides how or a stock ticker, the Teacher console now provides a way to display full size thumbnails of each individual Student that cycle continually through each student in the List. This view changes to the next student in the list at a rate of about 4 seconds each.

Send/Collect File Folders

Teachers may now send and collect an entire folder of files, including subfolders, rather than doing so a single file at a time.

Testing enhancements

Several enhancements to the Testing feature have been added. Teachers may now add tardy students to the test after it has already started. In addition, student's complete responses to all questions are now returned to the Teacher console, as well as the results of the test (number of correct answers.) The ability to add free form Essay questions to the test has also been added, allowing functionality similar to a Blue Book exam.

If you'd like to listen to one student's microphone and audio chat with that student, click on the *Monitor* menu and check *Enable Teacher Microphone (While Controlling)* and *Enable Student Microphone (While Controlling)*.

Note: Listening to audio on a Mac student will only work on OSX v10.5 and above.

Dynamic Class Lists

Particularly useful for 1:1 schools, Faronics Insight can now be integrated with any Student Information System (SIS) by exporting data from that system, which is then imported into the Teacher console as often as the data is updated.

View Students by IP address

Teachers may now view and sort Students by their IP address, which is a new column added in the Details view of the Student List.

Support for Vernier LabQuest devices

Faronics Insight now supports a Student running on Vernier LabQuest devices, which allow students to capture, measure, and analyze data in science labs. While it supports a subset of the standard Faronics Insight features based on the features available on the handheld hardware, Teachers can now interact in many ways with students using LabQuest devices. They can answer questions on the current lesson or send data files directly to the device. One of the great interactive ways to use this new feature is to project all of the Student thumbnails as the group progresses through a lab exercise.

Limit Drives

In addition to USB drives, CD/DVD drives can be turned off.

Clear Desktop

Immediately shuts down all applications on selected students with one click.

Insight Feature Overview

Insight includes the following features that were available in previous versions:

Show Teacher's Screen Full Screen or Windowed

Shows the teacher's screen to all students on the same Teacher channel.

Select between a "full screen" and a "windowed" show mode. In Full Screen mode, the teacher's screen will take over the entire student's screen and lock-out the student's mouse and keyboard.

In Windowed mode, the teacher's screen will appear in a window on the student's machine. The students can then resize the window and work by following along with the teacher.

When you show your computer screen to student computers, a sound is transmitted from your speakers. This sound lets students know that a Faronics Insight session is about to begin. To change this sound, replace c:\program files\insight\start.wav and stop.wav with your own sounds. On a Mac, these files are located in "/Applications/Faronics Insight/Teacher.app/Contents/Resources".

If you Show Teacher to a machine that is not logged in, it will always be in Full Screen mode.

View Thumbnail Mode (Monitoring)

View up to 3000 crisp high color student thumbnails at the same time. Every student's screen will appear as a "thumbnail" in the Faronics Insight Teacher console. There are 4 sizes of thumbnails that can be sized automatically to the best fit. You can choose to only view selected students by clicking on the *View All* button then checking the *View Selected* option.

Classroom Layout

Thumbnails can now be arranged in the shape of the classroom. Each size thumbnail has its own layout that is automatically saved. Classroom layouts can be saved loaded and locked. This feature is not supported in WMS teacher.

Magnify Thumbnails

When you hover over a thumbnail, the thumbnail size will quickly increase. If you do not like this feature, it can be turned off by clicking on the *View All* button then removing the check from the *Magnify* option.

Active Application/Website Icon

In the upper right hand corners of the thumbnail you have the option of seeing an icon of the active application and website.

Load/Save Profile

Available under the *View* menu, *Profiles* save key teacher settings so they can quickly be loaded at a later time. The following settings are saved in a profile:

- Class lists
- Thumbnail layouts
- Web Limiting URLs and button state
- Application Limiting programs and button state

- Limit Task Manager/Activity Monitor on Student
- Limit Dotted Decimal Browsing
- Limit Print button state
- Limit USB button state
- Mute button state
- Blank screens messages

Remote Control

Take remote control of a selected student or students. This means, you can remotely use the mouse and keyboard on the selected student's computer. With Faronics Insight, you can even remote control a computer at the login prompt.

In order to send the *ctrl-alt-del* command to a computer during remote control, you may click on the Control button's chevron menu -> Send *ctrl-alt-del* menu or the *Monitor* -> *Send ctrl-alt-del* menu item.

During Remote Control we map the Command key on the Mac to the *Alt* key on Windows and the *Option* key to the *Windows* key.

Selecting multiple computers will allow you to remote control multiple computers at the same time. This only works if they look exactly the same.

Limit Student Web Browsing

Temporarily disable all or selected student access to the web across all browsers.*

In the preferences dialog, you may choose between blocking...

- All web activity
- Allowing certain websites
- Blocking certain websites

This feature must be configured in the Preferences dialog and then turned on by clicking the Limit Web button or menu item.

The allow and block lists recognize the wildcards "*" and "?", making it easier to limit certain kinds of websites.

While the Internet is disabled, an icon on both the teacher and the student computer will indicate that the web is disabled.

If a student tries to browse to a website that isn't allowed, they can optionally be shown a website that lists the allowed websites.

Note*: On the Mac, Safari is the only supported browser for allowing certain websites. Block all works across all web browsers.

Limit Student Applications

Temporarily disable all or selected student access to specified software applications. This must be configured in the *Preferences* dialog and then turned on by clicking the *Limit Apps* button or menu. Students cannot get around this feature by simply renaming the application.

Disable Student Printers

Temporarily disable all or selected student printers. Once disabled, the students will not be able to print until you again enable printing.

Drive Limiting

Limit student ability to access USB thumb drives and CD-ROM drives. USB keyboards and mice will NOT be affected. This feature is supported on all Mac operating systems and PCs running Windows 2000 and higher.

Limit Task Manager (PC) or Activity Monitor (Mac)

Check this option if you want to limit the student's ability to run Task Manager or Activity Monitor.

Keystroke & Application Monitoring

Monitor all keystrokes that have been pressed on a computer by any user. This feature will not capture keystrokes at the login prompt or password dialogs. This feature is supported on all Mac operating systems and PCs running Windows 2000 and higher.

Student Voting

Ask Yes/No or multiple choice questions from the Faronics Insight Teacher console. View in real-time how many students have responded and how they responded.

Student Testing

Create up to 100 question tests that can include graphics (.jpg, .png, .gif, .bmp). The test questions can be randomized, sent out to one or more students and tracked in real-time. Teachers can optionally time the test, show results to students and export the results to a .csv file.

Muting

Mute the sound on student computers. This can be done through the *Mute* button or through the *Mute Student Speakers* menu under the *Restrict* menu.

Notebook battery monitoring

Monitors the battery state on a notebook or iPod. If the charge drops below 50%, a yellow warning battery icon is displayed. If the charge drops below 20%, a red critical battery icon is displayed. The percentage remaining and A/C status is also available from the Properties menu.

Secure Mode

Faronics Insight can be configured to require a password to access the console. This password must match the password that was entered during the secure student install.

Blank Screens

Blank-out all student screens on your channel and disable all student keyboards and mice. The message may be customized in the Preferences menu. This feature is useful when you want to lecture without the distraction of students playing with their computers.

Show a Student's Screen

Send a student's screen to all other students. Simply select a student and click the Show Student button. While the button is enabled, the student will have control of their machine and their screen will be shown to the rest of the students in the class.

Anti-tampering controls

Insight attempts to prevent students from mischievously unloading the software or disrupting the classroom.

Send and Collect Files

Send files to student computers and then collect them back. The student must be logged in for this feature to work.

The Mac student will handle C:\ and other windows paths for convenience when sending/collecting files in mixed PC, Mac environment.

Files can be brought back to unique folders, preserving the file names or to a single folder by renaming file names.

Send a message

Send a message to any or all students. This is often an effective way to get a distracted student back on task.

Student Question

Students can click on the Faronics Insight icon and type a question to the teacher. A question mark appears on their machine or thumbnail. In the Details view you can see the student question in the 'Last Question' column. In the Thumbnail view you can see the student question by moving the mouse over the thumbnail image which displays the question in a tooltip.

The question mark can be cleared by the teacher through a chat session or a right click on the thumbnail.

Text Chat

Initiate a text-based chat session with a single student from the teacher's console.

Shutdown, Logoff, Restart

From the teacher's console, shutdown, logoff or restart student machines.

Security status monitoring

The Faronics Insight Security Monitoring tool can be accessed by clicking *View Status Window*. This feature shows all Faronics Insight traffic so that you can identify unauthorized Faronics Insight activity.

You may also run the new *SecurityMonitor.exe*, found in the Utilities folder in the product download, to log all Faronics Insight activities to a file and filter those messages based on type and teacher.

Choose Random Student

This feature allows the teacher to let Faronics Insight randomly select a student. This is a fun way to engage students and encourage participation in the classroom.

Co-browse the Internet

Co-browse allows teacher's to browse the web using the primary tab and have the web browsers on the selected student machines actually browse to the same location as the teacher. Internet Explorer is supported on PCs and Safari is supported on the Mac.

View Student's Running Applications

View all running applications on a student's computer and add those applications to the allowed or blocked lists. Starting in Insight you may also stop a running application immediately from this dialog box.

Draw on screen

This option allows you to draw with a red pen on the screen. Press the left mouse button and move the mouse to draw. To end this mode, close the *Draw on Screen* window by clicking on the X in the upper-right corner of the screen.

Easy to see mouse cursor

In order for the students to better see the teacher's cursor, a large red cursor appears in the student view. These cursors are the same shape as the real cursor, but are 4 times the size and are bright red.

Student Screen Snapshot

Save a student's screen to a standard graphic file. (.jpg or .bmp) The date, time and student login name are displayed in the saved file.

NetWare Support

If the computer is using the NetWare client software, Insight will use the NetWare login name instead of the Microsoft login name.

Multicast support

One of the benefits of using TCP/IP is the availability of Multicast. Multicast allows networking hardware to keep Faronics Insight traffic local to Faronics Insight computers and cross subnets. Because some network routers or switches don't support Multicast, this option is disabled by default, but can easily be enabled in the *Preferences* menu on the *Network* tab.

Student Power-Off

Log off, restart or power off student computers.

This feature might experience problems on Windows 9x machines. Microsoft states that this will not work on certain hardware. While it has been tested successfully on Compaq, Dell, and IBM computers, it may not be able to properly power down all brands or models of computers running the Windows 98, or ME operating system. (Please see Microsoft Knowledge Base Article Q220706.)

Power on or Wake-On-LAN

If your student computers are configured to take advantage of Wake-On-LAN technology, the Faronics Insight Teacher can "power-on" all student PC's.

Most computers ship with the Wake-On-LAN option turned off in the BIOS, so you must go into the BIOS setup at boot time and turn it on.

Apple's version of Wake-On-LAN will wake a Mac from sleep but will not power-on a Mac that is off.

Channel Grouping

The teacher can control any specific channel or group any number of channels together controlling them simultaneously.

View Only

Allows teachers to supervise a selected student machine. While monitoring, you will see everything the student is doing, but will not be able to control that student's keyboard and mouse.

View All

This will show all computer screens in the classroom as a small, medium, large or extra large thumbnails.

As you move your mouse over a thumbnail image, the student's login name and computer name for that image appear in a tooltip. If the student has a question you will also see that question in the tooltip. If you hover for about a second the thumbnail will optionally get larger. If you right-click a thumbnail view, you will get a menu of options to control that student.

Refresh List

By selecting this option or using the shortcut key, F5 on the PC or *command+r* on the Mac, you can refresh the list and see any new students that might have entered the class. This occurs automatically every three minutes.

Run Program

This feature allows you to run an application or a web site on student computers. This can be quite useful for younger students who have trouble navigating to a specific web address or starting a specific application.

Send Message

Send messages to all or selected students. The message will appear in the lower, right-hand corner of the student's PC, or upper right-hand corner on Mac.

Show Internet History

Shows a list of web sites visited by the selected student. This feature works across all browsers on the PC. On the Mac, Show Internet History will only work with Safari.

Become a Student Machine

If you want to turn the Teacher computer into a student computer temporarily, you can do it from the teacher's console. Click on *Administer*, then *Become a Student Machine*. It will remain a student computer until it is rebooted or the current user has logged off.

Remove Selected Students from Class

This feature temporarily disables the Faronics Insight on the selected student machines. The software is re-enabled when a student next logs into that machine, or when you use the *Add Selected Student Back into Class* option on that student machine.

When a student's machine has been disabled, it will still appear in the list, but will have a graphical stop sign on the computer screen. This is just a reminder to the teacher that this student is not controlled by Faronics Insight.

Change Machine Display Name

This option does not alter the computer's actual machine name. However, it will allow an alternative name to be displayed in the Faronics Insight's Machine Name field. If your computers do not have meaningful Machine Names, you can use this option to better name the computers (i.e. "Row 1 Column 5").

Student Question

Students can type in a question for the teacher. That question can be seen by the teacher by hovering the mouse over the thumbnail or looking at the *Last Question* column in the details view.

Update Faronics Insight on Selected Students

This option can be used to quickly install a new version of Faronics Insight on selected student computers. To enable this feature, please refer to the Install Guide.

Change Student Channel from the Console

Changes student channels from the teacher's console. This must be enabled by an administrator with the *EnableChannelSelect.exe* utility.

Properties Page

The properties page is a useful troubleshooting tool if you need to know what teacher is taking an action on a particular student. It also shows the amount of power remaining in the battery and its charging status.

Toolbar Configuration

The toolbar can be customized through the menu *View -> Configure Toolbar*. On the PC, it can also be configured by holding down the "alt" key while dragging the buttons to a new location or removing them by dragging them off the button bar. You can also reset the toolbar back to the default in the *Customize Toolbar* window.

If there are more buttons on the bar than you can see, they can be accessed through the ">>" chevron button on the upper right corner of the toolbar.

Student Name from Active Directory

Faronics Insight normally displays the Windows or Novell login name. However, if the Student Display name is available in Active Directory, that Display name is displayed in the Login Name column.

Teacher Kiosk Mode

The Faronics Insight Teacher console can be run in a way so that it cannot be minimized or closed. To run the Faronics Insight Teacher console in Kiosk Mode refer to the Installation Manual.

Preferences

Preferences configures how Faronics Insight works. See the *Configuration Preferences* section below...

NOTE: The system administrator who set up Faronics Insight on your network most likely optimized these settings during installation. You may want to consult with that person before making any changes to the custom preferences.

Teachers may want to create tests on a home computer or different computer on the school network.

To create tests on a different computer other than the Faronics Insight Teacher computer follow these steps:

1. In My Computer, browse to c:\Program Files\Faronics. On a Mac, browse to Applications\Insight\Testing.
2. Windows copy the Testing directory to a thumbdrive, CD or network drive. On a Mac copy Testbuilder.app.
3. On Windows paste the Testing directory from the thumbdrive, CD or network drive to any Windows computer. On a Mac paste *Testbuilder.app* to any location.
4. On Windows, double click on *Testbuilder.exe* to launch the Faronics Insight Test Builder. On a Mac, double click on *Testbuilder.app*.
5. Create a test
6. Save a test
7. Copy the saved tests (.lst files) back to the c:\Program Files\Faronics\Insight\Testing folder on Windows or the Applications\Insight\Testing folder on a Mac.
8. Browse for the newly created test and send it out to the students through the Faronics Insight Teacher console.

Faronics Insight Security Monitoring

With a tool as powerful as Faronics Insight, there's always a possibility for misuse. A student may be tempted to find an unauthorized copy and load the teacher software to disrupt a class.

There are three ways to deal with possible misuse.

1. Set school policies around appropriate behavior, monitor and enforce the policy.
2. Install Insight in Active Directory Secure Mode which requires teachers to belong to a domain group called "Faronics Insight Teachers" in order to manage student computers. (Recommended method)
3. Install Insight in Secure mode, which requires a password.

Security Monitor

Security Monitor is also available in the utilities folder on the Faronics Insight download file. This application runs on any PC and will capture a log of Faronics Insight activity, including the installation or un-installation of the Faronics Insight program.

With this utility, many schools have quickly been able to pinpoint students who are abusing the "appropriate use policy" of their classroom.

Teachers can also access the Security Monitoring data by clicking *View* then *Status Window*. As soon as teachers perform actions you will see the security messages.

Students downloading and installing a demo version of Faronics Insight caused the largest security problem with the previous versions. Starting with *Faronics Insight v6.1*, the demo version cannot interact with the released version.

The Preferences dialog contains settings for both administrators and teachers. Listed below are the settings that a teacher may want to change:

Full Screen or Windowed

- Full screen shows the teacher's screen on the student's screen and disables the keyboard and mouse
- Windowed shows the teacher's screen on the student's screen in a re-sizeable window and does NOT disable the student's keyboard and mouse.

Show Dual Monitors

Turns on dual monitors support on the teacher console and the student.

Blank Screen Message

Allows the teacher to specify a message that will be shown when student screens are blanked.

Sounds

Allows the teacher to turn off the sound that is played when the Show teacher or Show student button is pressed.

Limit Task Manager / Activity Monitor on Student

If checked the Task Manager on PCs and the Activity Monitor on Macs will be disabled. This helps prevent hacking and disrupting Faronics Insight.

Restrict IP Address and Internet Explorer In Private Browsing

Some students were using IP address browsing to get around Faronics Insight's web limiting feature. If this option is selected, students cannot browse the web using IP addresses. (i.e. <http://70.235.50.6>)

Faronics Insight will also restrict the In Private browsing feature of Internet Explorer.

Web Limiting

Specifies when Web Limiting is enabled, whether to...

- Block all Web Browsing
- Allow only the following websites
- Block the following websites

List of websites can be saved and loaded. The wildcards "*" and "?" can be used. On Windows students the web can be limited on Windows Internet Explorer, Firefox and Chrome. On Mac students the web can only be limited when students are using Safari.

Application Limiting

Specifies when Application Limiting is enabled, whether to...

- Allow only the following applications
- Block the following applications

Applications can be added to either the allowed or blocked lists by clicking on the add button in the preferences dialog or by Viewing the Student's Running programs. The preferences dialog shows applications running on the Teacher's PC.

The application lists can be saved and loaded.

Show Current Application Icon on Thumbnails

When enabled, this feature shows the current application that is running on the student PC as an icon in the upper left hand corner of the thumbnail.

Show Last Visited Website Icon on Thumbnails

When enabled, this feature shows the website that was last visited by the student as an icon in the upper right hand corner of the thumbnail.

Full Path of the Faronics Insight Folder on Student Machines

Allows the teacher to specify the default location for student files. This can be on the hard drive or a network drive.

Drive Limiting

Specifies the kinds of drives that should be blocked when you click the Limit Drives button.

Keystroke Alerts

Create, save and load lists of words that alert the teacher if typed by a student. Each word should be separated by a carriage return.

Note: There are additional options, such as the network tab, that are described in the Installation manual and should only be changed by a system administrator.