



2012 GUIDE TO GREEK LIFE FLORIDA STATE UNIVERSITY



TABLE OF CONTENTS

Introduction

Greek Life at FSU	4
University Policies	5
Office of Greek Life	6
Questions & Answers	7

Greek Organizations

Alpha Chi Omega	8
Alpha Delta Phi	9
Alpha Delta Pi	10
Alpha Epsilon Pi	11
Alpha Gamma Delta	12
Alpha Kappa Alpha	13
alpha Kappa Delta Phi	14
Alpha Phi	15
Alpha Phi Alpha	16
Alpha Tau Omega	17
Chi Omega	18
Chi Phi	19
Delta Chi	20
Delta Delta Delta	21
Delta Gamma	22
Delta Tau Delta	23
Delta Zeta	24
Gamma Phi Beta	25
Iota Phi Theta	26
Kappa Alpha	27
Kappa Alpha Psi	28
Kappa Alpha Theta	29
Kappa Delta	30
Kappa Delta Chi	31
Kappa Kappa Gamma	32
Kappa Sigma	33
Lambda Tau Omega	34
Lambda Theta Alpha	34
Lambda Theta Phi	36

Omega Phi Beta	37
Phi Beta Sigma	38
Phi Delta Theta	39
Phi Iota Alpha	40
Phi Kappa Psi	41
Phi Kappa Tau	42
Phi Mu	43
Phi Sigma Kappa	44
Pi Beta Phi	45
Pi Kappa Alpha	46
Pi Kappa Phi	47
Pi Lambda Phi	48
Sigma Alpha Epsilon	49
Sigma Beta Rho	50
Sigma Chi	51
Sigma Delta Tau	52
Sigma Gamma Rho	53
Sigma Iota Alpha	54
Sigma Lambda Beta	55
Sigma Nu	56
Sigma Phi Epsilon	57
Sigma Pi	58
Tau Kappa Epsilon	59
Theta Chi	60
Theta Nu Xi	61
Zeta Beta Tau	62
Zeta Phi Beta	63
Zeta Tau Alpha	64

Greek Council

Interfraternity Council	65
Multicultural Greek Council	66
National Pan-Hellenic Council	67
Panhellenic Association	68
Recruitment Staff	69

GREEK LIFE AT FSU

Leadership

Greek students play a proactive role in leading Florida State's campus! Not only does the Greek community provide leadership opportunities such as the Interfraternity Council, Multicultural Greek Council, National Pan-Hellenic Council and Panhellenic Association, Greek students set a positive example in many campus-wide student organizations, including:

- » Student Alumni Association
- » Seminole Student Boosters
- » Garnet and Gold Key
- » Garnet and Gold Guides
- » Student Government Association
- » Rho Lambda
- » Hispanic Latino/a Student Union
- » Orientation Leaders
- » Resident Assistant
- » Student United Way
- » CARE Counselors
- » Black Student Union
- » Asian American Student Union
- » Student Foundation
- » Garnet and Gold Scholars

All members are encouraged to run for positions to maintain the traditions of leadership and Seminole pride that each chapter proudly upholds. Greek leaders become adept at managing their time as they balance their academic and social schedules, while improving their problem-solving, decision-making, communication, and leadership skills.

Scholarship

Despite all of the activities available to Greek students, the Greek community still manages to excel academically. Each chapter has varying GPA requirements, study hours, and/or incentive programs to promote academic excellence.

Fraternities and sororities recognize that academics are a priority and promote and reward you for your scholastic achievements. Furthermore, chapter involvement in honorary organizations is phenomenal, with members participating in Mortar Board, Omicron Delta Kappa Honor Society, Phi Beta Kappa Honor Society, Phi Eta Sigma Honor Society, and many more.

Brotherhood/Sisterhood

One of the most memorable benefits of joining the Greek community is the long-lasting friendships that develop. Being a member of a Greek organization is not the only way to expand your social circle at FSU; however, it is a consistent and exciting approach to meeting many diverse students. Joining a fraternity or sorority is not about conformity; instead, it teaches students how to develop their individuality and still be able to participate in group dynamics. Memories, internship opportunities and employment opportunities are limitless as students connect with their peers in the Greek community. Life-long connections are formed as a student becomes more involved within their chapter and their council.

The Greek community is an amazing social resource because it means there is always someone you can study with, or go to the gym, catch a concert or movie, enjoy Tallahassee nightlife, or just sit, chat, and relax! In addition to the typical bonding activities, Greek students have found other ways to have fun and meet people. Homecoming, Dance Marathon, and Greek leadership conferences are other ways that Greek organizations are paired up to network.

Community Service & Philanthropy

Greek students are committed to being a positive entity in our Tallahassee community by participating in many campus-wide philanthropies and local projects. Each fraternity and sorority has its own philanthropy that it supports every year. These many service hours not only benefit the community but are documented in transcripts which act as a valuable asset for applications to graduate school, scholarships, awards, and professional organizations.

The time devoted to and the funds raised for various philanthropies are a way for Greek students to enjoy an enriching experience at FSU, while making a positive difference in the lives of others.

UNIVERSITY POLICIES

Alcohol Policy

The Florida State University affirms the guiding ethical principle of responsible freedom. Students, staff, and faculty are expected to show respect for order, ethical conduct, the rights of others, and a high sense of personal honor and integrity. The Florida State University neither encourages, nor condemns the legal consumption of alcoholic beverages. The University recognizes, however, that the majority of undergraduate students are below the legal drinking age and that there are serious health risks and behavior problems associated with the use of alcohol in the collegiate environment. Consequently, alcohol will be permitted at Florida State University only in those settings which:

1. Comply with state laws, municipal county ordinances, and this policy;
2. Present minimum low health and safety risk; and
3. In no way inhibit the full participation of those who choose not to drink alcohol.

Any person or group in violation of federal or state laws, local ordinances, or of this policy will be reported to the proper federal, state, local or University authorities for appropriate action.

Hazing Policy

The Student Conduct Code defines hazing as “any group or individual action or activity that inflicts or intends to inflict physical or mental harm or discomfort or which may demean, disgrace, or degrade any person, regardless of location, intent, or consent of participant(s)” (see Section 5, (d) of the Student Conduct Code for the definition). All forms of hazing by any university student, student organization, or employee are expressly prohibited. Serious penalties, such as separation from the university or loss of affiliation with Florida State University, may be imposed on individuals or groups found in violation of these rules. To view the FSU hazing policy online visit

<http://hazing.fsu.edu>

Enrollment Policy

Fraternities and sororities can only open their membership to Florida State University students who are in good standing with the University. Because our community believes so strongly in the value of the Greek experience, we believe this expectation is critical and necessary to preserve the high quality of students that become involved in the Greek community. Membership in Greek organizations is a privilege that should be reserved for students who are matriculating and contributing to the University community. Fraternities or sororities that have non-University affiliated individuals within their chapters are operating outside of the University’s expectations and subject to review under the Student Conduct Code.

OFFICE OF GREEK LIFE

Dear Future Members and Parents,

Congratulations on your acceptance to The Florida State University! On behalf of the 4,800 members of the Greek community at FSU, we welcome you to the University. You are about to embark on an exciting journey that will help you grow and change in ways you never thought possible. You will not only have fun, but will be challenged both intellectually and personally.

This publication is a brief introduction to our wonderful and exciting Greek community at FSU and is designed to help you explore the extraordinary opportunities that our community has to offer. As you begin your college career, you will find that there are many organizations on campus for you to become involved with. Although each and every one of these organizations will contribute to your development as a student, none are quite as exciting and rewarding as becoming a member of a fraternity or sorority.

The Greek community exists as a proven support system for hundreds of thousands of men and women across the country and around the world. It is our hope that The Florida State University's Greek community can help personalize your college experience by offering close friendships, scholastic assistance, leadership opportunities, educational programming, social interaction and enrichment, and the chance to help others through philanthropic events and community service projects. Your involvement will build character and an appreciation for others, as well as enhance awareness of personal responsibility.

We encourage you to participate in Recruitment/Rush/Intake and to remain open minded about all the opportunities that our Greek community has to offer. Fraternities and sororities are a source of pride at FSU and every chapter has something unique to offer. The Office of Greek Life looks forward to working with you and we are here to assist you in any way possible!

In Seminole Pride,
The Office of Greek Life Staff

QUESTIONS & ANSWERS

Why should I join a Greek organization?

At first glance, FSU can seem overwhelming with a population of more than 40,000 students. The Greek community gives students the chance to make a big campus feel small. When choosing a fraternity or sorority, you should look for a comfortable fit – a place where you share values and interests with the other members. By choosing to become a member of a Greek organization, you will meet people who grow to be your closest friends, those who will cheer you on when you are successful and will support you when the going gets tough. Greek organizations promote the development of close ties between members through living, studying, working, and having fun together.

How can being Greek help me succeed academically?

Academic success is an important part of college life. One of the central purposes of fraternities and sororities is to promote academic excellence. Each organization requires a minimum grade point average to remain an active member of the chapter. All chapters emphasize the value of academic success and will help you succeed with scholarship programs, study halls, incentive programs, and study buddies.

Are Greek students involved on campus?

Greek organizations give members the opportunity to enhance and develop their leadership skills. Members of the Greek community are represented in most campus groups including Student Government Association, Student Alumni Association, Orientation Leaders, Dance Marathon, Homecoming and many more. As a chapter member, you will have the opportunity to become involved in a variety of Greek organizations including the Interfraternity Council, Multicultural Greek Council, National Pan-Hellenic Council, and the Panhellenic Association.

Do Greeks participate in community service?

Every year Greek students give thousands of hours of service to the community. Members donate their time to projects such as: Habitat for Humanity, reading to underprivileged children, Adopt-A-Highway, and the Special Olympics. Greeks also sponsor fundraising activities for charitable organizations. Each fraternity and sorority chapter has its own national philanthropy, which it supports on an ongoing basis. Chapters have special events to raise money for their particular project. Some of the projects that chapters are involved with include raising money for research for the blind, children with terminal illnesses, women with breast cancer, and victims of domestic violence.

Does being a member of a Greek letter organization have benefits after graduation?

With the job market becoming increasingly competitive, a college degree no longer guarantees a successful career. What you know is now just as important as who you know. When someone joins a fraternity or sorority, they begin building relationships with the families and friends of those chapter members. Members are also introduced to alumni of their chapters all over the country. By joining a Greek letter organization, you can create an entire network of people, from which could possibly come a future employer, spouse, or lifelong friend.

Does it cost a lot to be Greek?

Joining a fraternity or sorority does carry a financial commitment. Each chapter is self-supporting through dues paid by members. When students join a Greek letter organization, they also agree to pay dues and to maintain membership. Although chapters may make accommodations for special needs, students should discuss the financial obligations with their family and chapter leaders before deciding to join.



Alpha Chi Omega (Alpha Chi) • 518 W. Park Avenue
axofloridastate.com • Est. October 15, 1885

FOR OVER 75 YEARS, the Beta Eta chapter of Alpha Chi Omega has been recognized for its strong sisterhood and service to the community. Each year we hold our annual Par Tee Golf Tournament, which raises money for the Women’s Refuge House for battered women and children. Alpha Chi’s are also involved in countless organizations on FSU’s campus. The bond of love, loyalty, and trust that our sisters share, shapes our lives and makes memories that last a lifetime. The sisters of Alpha Chi Omega would like to wish you the best of luck with Recruitment. We hope that you find the true friendship and happiness that we have found here at Alpha Chi Omega.



ESTABLISHED AT FSU March 29, 1929

PRESIDENT Caitlin McDonald
(C.mae.mcdonald@gmail.com)

RECRUITMENT CHAIR Rachel Perraud
(Rperraudaxo@gmail.com)

COLORS Scarlet Red and Olive Green

FLOWER Red Carnation

SYMBOL Lyre

MINIMUM GPA 3.0

AWARDS & FUN FACTS 2012 Dance Marathon: Most Spirited Chapter, 2011 Finalist Chapter for FSU’s, President’s Cup Award (Sorority of the Year), 2011 Greek Leadership Excellence Award, Greek Campus Involvement Excellence Award, Woman of the Year Finalist: Lauren Pacetti, 2011 2nd Place Dance Marathon

CAMPUS INVOLVEMENT Club Lacrosse, FSU Equestrian Team, Seminole Dance Force, Phi Eta Sigma



Alpha Delta Phi (A-D-Phi) • 324 West College Avenue
alphadeltfsu.webs.com • Est. October 29, 1832

THE MISSION OF THE ALPHA DELTA PHI is to provide a comprehensive and positive experience for all undergraduate and alumni brothers through their development of social, ethical, leadership, and scholastic skills; as well as instilling it its members the importance of community service and literary merit. Since our founding in 2009, our chapter has become an integral part of Florida State's community. Since our founding date we have continued to grow exponentially. We just moved into an on-campus house and look forward to this year's rush. Many special benefits accrue to member of Alpha Delta Phi, which include opportunities for a practical leadership experience while connecting with both the Florida State and Tallahassee communities. Alpha Delta Phi welcomes you to Florida State and invites you to grow with us through brotherhood and campus leadership.



PRESIDENT Steven Osheroff
(svo09@my.fsu.edu)

RECRUITMENT CHAIR Aaron McCausland
(am09c@my.fsu.edu)

COLORS Emerald Green and White

FLOWER Lily of the Valley

SYMBOL Star and Crescent, Sword, Spear, and Monument

MINIMUM GPA 2.7

ANNUAL PHILANTHROPY Adopt A Puppy
Benefiting the Animal Shelter Foundation

AWARDS/FUN FACTS Third Place Homecoming
2011, First Place Dance Marathon Garnet
Division 2012, First Place Dance Marathon Gold
Division 2011

CAMPUS INVOLVEMENT Order Of
Omega, Dance Marathon, Sailing Club,
Water Polo Team, President of the
Wrestling Club



Alpha Delta Pi (ADPi) • 537 West Jefferson Street
adpiseminoles.org • Est. May 15th 1851

FOR OVER 100 YEARS, the Iota Chapter of Alpha Delta Pi has been known for its intelligent, beautiful and well-rounded women. We pride ourselves on our sisterhood and always uphold our open motto, We Live for Each Other. Our involvement with campus activities has won us numerous awards and honors at FSU, including Highest GPA and Panhellenic Woman of the Year. Our philanthropy, ADPi-athalon, brings many Greek and campus organizations together to raise money for the Ronald McDonald House. In 2009 we founded our fall philanthropy, Homers and Hogs, in support of an alumni who recently passed away from Lou Gehrigs Disease. ADPi is more than just a college experience; it's a friendship, a bond, and a love that will last a lifetime. We wish you the best of luck with Recruitment, and hope that you find the happiness and the amazing sisterhood that we have found in our home away from home, Alpha Delta Pi.



- ESTABLISHED AT FSU** January 16th 1909
- PRESIDENT** Taylor Wyker (taw09@my.fsu.edu)
- RECRUITMENT CHAIR** Emily Mattei (eem09d@my.fsu.edu)
- COLORS** Azure Blue and White
- FLOWER** Woodland Violet
- SYMBOL** Diamond
- MINIMUM GPA** 3.0
- AWARDS & FUN FACTS** 2011 Panhellenic Sorority of the Year (Awarded 11 of the past 14 years), Sisterhood Excellence Award: 2010 & 2011, New Member of the Year: 2011
- CAMPUS INVOLVEMENT** Senior Class President 2011 & 2012, FSU Honors Program President & Vice President, Student Alumni Association Executive Members



AETI

Alpha Epsilon Pi (AEPi) • 1924 Heritage Grove Circle (Building 7)
aepifsu.com • Est. November 7, 1913

ALPHA EPSILON PI PROVIDES opportunities for Jewish men seeking the best possible college and fraternity experience. Alpha Epsilon Pi develops leadership at a critical time in a young man's life. Alpha Epsilon Pi's role is to encourage brothers to remain dedicated to our fraternity's ideals, values, and ethics. Our fraternity will prepare a member to be one of tomorrow's leaders so that he may help himself, his family, and community.



ESTABLISHED AT FSU 1967

PRESIDENT Brandon "Rocky" Kaller
(president@aepifsu.com)

RECRUITMENT CHAIR Josh Stark
(joshua.ross.stark@gmail.com)

COLORS Gold and Blue

FLOWER fleur-de-lis

SYMBOL Cofa

MINIMUM GPA 2.5

AWARDS & FUN FACTS Adam Richman (Man vs. Food Actor) and Mark Zuckerberg are only two examples of AEPi Alumni!

CAMPUS INVOLVEMENT Head of Pow Wow, Homecoming Exec, Tally Baked Inc., Etc.



Alpha Gamma Delta (Alpha Gam) • 517 West Park Avenue
websites.omegafi.com/omegaws/alphagammadeltafloridastate/ • Est. May 30, 1904

SINCE 1925, MEMBERS OF ALPHA GAMMA DELTA at Florida State have been dedicated to academic excellence, leadership development, philanthropic activities, and sisterhood. Alpha Gams can be found on campus in a variety of organizations and honor societies. Each year we hold our spring philanthropy, The Alpha Gam Lip Jam, and our fall philanthropy, Dogs for Diabetes, benefiting diabetes research and funding. With our annual formals, socials, sisterhood retreats, intramural sports, it is hard not make memories that will last a lifetime. We look forward to inviting you into our circle of sisterhood, where you will grow, learn, and be inspired.



ESTABLISHED AT FSU May 22, 1925
PRESIDENT (emm09h@my.fsu.edu)
RECRUITMENT CHAIR Stephanie Pettis (sp09n@my.fsu.edu)
COLORS Red, Buff, & Green
FLOWER Red & Buff Roses with Asparagus Plumosa Ferns
SYMBOL Double Rose
MINIMUM GPA 2.5
AWARDS & FUN FACTS 3rd Place Overall Homecoming 2011, 2nd Place Overall Greek Week 2012, 1st Place Garnet Division Dance Marathon
Karen McCullah Lutz, Screenwriter of Legally Blond, She's the Man, The House Bunny
Ashley Durham, Miss USA 2011 1st Runner Up
CAMPUS INVOLVEMENT Overall Committee Dance Marathon 2012, 2013, Overall Committee Relay for Life 2012, Phi Eta Sigma



AKA

Alpha Kappa Alpha • FSU Box 7626
aka1908.com • Est. January 15, 1908

THE ZETA OMICRON CHAPTER OF ALPHA KAPPA ALPHA SORORITY, INC.

has a sisterhood like no other. Living by Alpha Kappa Alpha's motto, "By culture and by merit", members of Zeta Omicron hold leading positions in many organizations on Florida State University's campus while achieving high academics. All chapter members participate in community service initiatives such as the bi-weekly Reading and Math Tutorial Program for children of all ages at B.L. Perry Library, weekly mentoring through the new Emerging Young Leaders program which empowers middle school aged girls, and promoting Global Leadership Through Timeless Service. Every year the Zeta Omicron chapter hosts successful back-to-school clothing and supply drives for the Lawrence-Gregory Community Center at Dade Street and assist the elderly at Woodmont Senior Living. Each semester, Zeta Omicron host fundraisers to support the sorority's national philanthropy with Heifer International. These women exude excellence, class, and pre-eminence in such a way that their presence on Florida State University's campus can never be duplicated.



ESTABLISHED AT FSU June 5, 1971

PRESIDENT Ashley Fagan (adf09@my.fsu.edu)

RECRUITMENT CHAIR Maisha Alexander
(mpa09@my.fsu.edu)

COLORS Salmon Pink & Apple Green

FLOWER Pink Tea Rose

SYMBOL Green Enamel Ivy Leaf

MINIMUM GPA 2.5

AWARDS & FUN FACTS Norma White Scholar Award, Freddie Grooms-McClendon Caring Award, Vertelle Middleton Most Promising Undergraduate Award, Mary Shy Scott Fine Arts Award

CAMPUS INVOLVEMENT Garnet and Gold Key Leadership Honor Society, Garnet and Gold Guides, MAPS, Union Board, Army ROTC, Jump Start, and Order of Omega



alpha Kappa Delta Phi (aKDPhi)
akdphifsu.com • Est. February 7, 1990

alpha KAPPA DELTA PHI SORORITY, INC. fosters the making of successful leaders by assisting and challenging our members to reach their maximum potential. We strive to maintain the highest levels of integrity and innovation in the promotion of sisterhood, philanthropy, scholastic excellence, and Asian-Awareness in the community while creating lifelong relationships.



ESTABLISHED AT FSU Spring 2001
PRESIDENT Divyia Joseph
COLORS Purple and White
FLOWER Iris
SYMBOL Hourglass
ANNUAL PHILANTHROPY Avon Breast Cancer Crusade
MINIMUM GPA 2.5
AWARDS & FUN FACTS We are the first and only internationally recognized Asian-American interest sorority in the nation!
We are the first Asian-American Greeks in Florida!
CAMPUS INVOLVEMENT Homecoming 2010, Relay for Life 2011, The Big Event 2011



Alpha Phi (APhi) • 883 West Gaines Street
fsualphaphi.com • Est. October 10, 1872

ALPHA PHI IS A SISTERHOOD OF WOMEN supporting one another in lifetime achievement. The Gamma Phi chapter of Alpha Phi is part of a longstanding 139-year international history. Alpha Phis are proud to support the Alpha Phi Foundation benefiting women’s heart health in addition to the Tallahassee PACE Center for girls. Alpha Phi hosted their inaugural Red Dress Gala and Phi-Fa soccer tournament raising over \$24,000 during the 2011-2012 academic term.

Alpha Phi is dedicated to promoting sisterhood, cultivating leadership, encouraging intellectual curiosity and advocating service. Alpha Phi develops character for a lifetime. In Alpha Phi there is encouragement, understanding, and opportunities to grow. With members all over the world and collegiate and alumnae chapters throughout the United States and Canada—our sisterhood knows no bounds.



ESTABLISHED AT FSU 1959, re-colonized Fall 2010

PRESIDENT Kathleen Trainor
(fsu.alphaphi.president@gmail.com)

RECRUITMENT CHAIR Anna F. Dower
(fsualphaphirecruitment@gmail.com)

COLORS Silver & Bordeaux

FLOWER Lilly of the Valley & the Forget-me-not

SYMBOL Ivy Leaf & the constellation Ursa Major

MINIMUM GPA 2.8

AWARDS & FUN FACTS Excellence in Philanthropy 2012, Cheers for Children Spirit Award, Red Dress Gala raised over \$22,000

CAMPUS INVOLVEMENT Homecoming Executive Council, SAA Executive Council, SGA Executive Council



Alpha Phi Alpha (Alphas)
 iotadelta.net • Est. December 4, 1906

SINCE ITS INCEPTION ALPHA PHI ALPHA FRATERNITY, INC has strived to fulfill its mission of developing leaders, promoting service and advocacy for our communities through manly deeds, scholarship, and love for all mankind. By carrying out these duties to society, Alpha Phi Alpha fulfills its purpose to its members and surrounding communities. Since 1974 the Iota Delta Chapter of Alpha Phi Alpha, has worked diligently to maintain academic excellence, promote social awareness and cultivate service-orientated leadership.

Through consistent dedication to the foundation of our fraternity, the Iota Delta Chapter has forged a lineage on the Florida State University's campus that includes leadership in various agencies, both the legislative and executive branches of the Student Government Association, the Student Foundation and a multitude of other campus organizations. The Iota Delta Chapter of Alpha Phi Alpha Fraternity, Inc. has made it a priority to positively develop black men on campus. We have proudly served the Florida State University in several capacities. In our 38 years of being on campus, we have produced a legacy that is unmatched, unrivaled and unconquered.



ESTABLISHED AT FSU 1974

COLORS Black & Old Gold

FLOWER Yellow Rose

SYMBOL Great Pyramids of Giza, Great Sphinx of Giza, Ape, Pharaoh

ANNUAL PHILANTHROPY March of Dimes, Relay for Life

MINIMUM GPA 2..5

AWARDS & FUN FACTS Alpha Phi Alpha was the first black inter-collegiate fraternity established;

Some members include Dr. Martin Luther King, Jr., Thurgood Marshall, and W.E.B. Dubois

CAMPUS INVOLVEMENT Strong Presence in SGA, BSU, CSA, Honor Societies, and Community Service Organizations



ATΩ

Alpha Tau Omega (ATO, Taus) • 733 W Pensacola Street
fsuato.airset.com • Est. September 11, 1865

SINCE 1949, MEMBERS OF THE EPSILON SIGMA chapter of the Alpha Tau Omega Fraternity have strived for greatness, academic excellence, campus and community involvement, leadership skills, and brotherhood. Striving to become better leaders, our brothers are involved in numerous organizations and the community. At Alpha Tau Omega we live by a saying of renowned Alumnus Skip Smith, "We do not apologize for having high standards". Our Fraternity is for a lifetime and our substantial Alumni go to show that even after college, your life as an ATO is never ending. The bonds of brotherhood established in Alpha Tau Omega during your four years at FSU will leave you with more than good memories. The brothers from your chapter will become some of your best friends.



ESTABLISHED AT FSU March 5, 1949

PRESIDENT Christian Bonser
(Cwb09c@my.fsu.edu)

RECRUITMENT CHAIR Anthony Hackett
(Adh09d@my.fsu.edu)

COLORS Old Gold & Sky Blue

FLOWER White Tea Rose

SYMBOL Viking

MINIMUM GPA 2.8

AWARDS & FUN FACTS 2009 FSU Homecoming Champions, 2010 Greek Week All Campus Champions, 2011 Best Brotherhood

CAMPUS INVOLVEMENT Psi Chi Honor Society, Student Alumni Association, College Republicans



XΩ

Chi Omega (Chi O) • 661 West Jefferson Steet
info.theginsystem.com/websites/XO_FSU • Est. April 5, 1895

CHI OMEGA IS A SISTERHOOD that aims to provide a network of friends and lifelong development for both collegiate and alumnae members. Chi Omega is committed to: personal integrity, excellence in academic and intellectual pursuits, inter-generational participation, community service, leadership opportunities, and social enrichment. Chi Omega is a diverse group of down-to-earth, talented, and outgoing women who are very involved around campus, and in the community. Chi Omega provides its members with unique opportunities in leadership, scholarship, and lifelong friendship. Although Chi Omega is among the largest women's organizations in the world, the strong sisterhood we share creates the comforts of a home away from home. We are excited to offer you the opportunity to become a part of our sisterhood we share!



ESTABLISHED AT FSU May 7, 1908

PRESIDENT Brooke McMann
(bm09d@my.fsu.edu)

RECRUITMENT CHAIR Alessia Sahli
(as09h@my.fsu.edu)

COLORS Cardinal & Straw

FLOWER White Carnation

SYMBOL Skull & Cross Bones

MINIMUM GPA 3.0

AWARDS & FUN FACTS Panhellenic Sorority of the Year: 2004, 2009, 2010, Panhellenic Woman of the Year: 2008, 2012, FSU Homecoming Princess: 2008, 2012

CAMPUS INVOLVEMENT FSU Cheerleaders, FSU Orientation Leaders, FSU Track and Field Athletes



Chi Phi • 829 W. Pensacola St.
chiphifsu.com • Est. December 24, 1824

IN FEBRUARY OF 1968 THE NU DELTA CHAPTER OF THE CHI PHI FRATERNITY received its charter at Florida State. Our fraternity turns students into scholars, ambition into action, and young men into gentlemen. The Brothers of Chi Phi uphold three basic principles laid down during the foundation of our fraternity in 1824: truth, honor, and personal integrity. With these values, a man sets himself above his peers, and above what is expected of him. Chi Phi has been recognized through the Greek community for being strong in athletics, this past fall we finished 2nd place in the Garnet Division. This past year we held our first annual Tinsley 5K run. Each year we hold numerous events to give brothers the opportunity to meet other members from the large Greek community at Florida State.



ESTABLISHED AT FSU 1968

COLORS Scarlet & Blue

SYMBOL Chakett

ANNUAL PHILANTHROPY Chi Phi Build-A-Boat benefiting the Boys and Girls Club of America

MINIMUM GPA 2.5

AWARDS & FUN FACTS The Nation's oldest fraternity; 2011 Dance, Marathon Champions; Winner of 7 out 10 Sorority Philanthropies

CAMPUS INVOLVEMENT 3 members on the Dance Marathon Overall Committee, Homecoming Executive Council



Delta Chi (D Chi) • University Center A4100
dxfsu.com • Est. 1961

FOUNDED IN 1890, the Delta Chi Fraternity has continued to uphold the principles of friendship, justice, character, and education as the hallmark for a well rounded individual.

We are a close brotherhood that encourages our members to be the best man they can be through service, philanthropy, leadership, and involvement on campus and in the community. We seek men who are desire personal and professional development and who seek opportunities for achievement and merit.



ESTABLISHED AT FSU 1961

PRESIDENT Matt Weaver (mw10e@my.fsu.edu)

COLORS Red & Buff

FLOWER White Carnation

ANNUAL PHILANTHROPY Earthball

MINIMUM GPA 2.25

AWARDS & FUN FACTS There is a Delta Chi in the Football and Baseball Hall of Fame

CAMPUS INVOLVEMENT Overall Director of Dance Marathon, Honors Program, FSU Radio Station, College Republicans, Dive Club, Army ROTC, Greek Conduct Board, Presidents List, and Deans List.



Delta Delta Delta (Tri-Delta) • 534 West Park Ave
trideltafsu.com • Est. November 7, 1888

IT SHALL BE THE PURPOSE OF DELTA DELTA DELTA to promote and develop mutually beneficial relationships between the Fraternity and the colleges and universities where the Fraternity has established chapters, to develop qualities of unselfish leadership among its members, and to encourage them to assume, with integrity and devotion to moral and democratic principles, the highest responsibilities of college women.



ESTABLISHED AT FSU March 13, 1916

PRESIDENT Charlotte Karaphillis
(cik09@my.fsu.edu)

RECRUITMENT CHAIR Ashley Pyatte
(alp09c@my.fsu.edu)

COLORS Silver, Gold, Blue

FLOWER Pansy

SYMBOL Pearl & Pine

ANNUAL PHILANTHROPY St. Jude Children's Research Hospital

MINIMUM GPA 3.0

AWARDS & FUN FACTS Top 10% of the Tri Delta chapters in money raised to benefit St. Jude Children's Research Hospital, 2012 1st Place AGD water wars, 2012 1st Place SAE Open

CAMPUS INVOLVEMENT Dance Marathon Morale Captains, 2012 Advertising Club Vice President, 2012 Order of Omega Vice President of Programming



ΔΓ

Delta Gamma (DG) • 143 North Copeland Street
deltagammafsu.com • Est. December 25, 1873

DELTA GAMMA OFFERS TO WOMEN OF ALL AGES a rich heritage based on principles of personal integrity, personal responsibility, and intellectual honesty. Its primary purpose is to foster high ideals of friendship, promote educational and cultural interests, create a true sense of social responsibility, and develop the finest qualities of character.



ESTABLISHED AT FSU 1951

PRESIDENT Annemarie Younger
(aay09c@My.fsu.edu)

RECRUITMENT CHAIR Mariana Russo
(Mtr09@my.fsu.edu)

COLORS Bronze, Pink, & Blue

FLOWER Cream Rose

SYMBOL Anchor

MINIMUM GPA 2.45

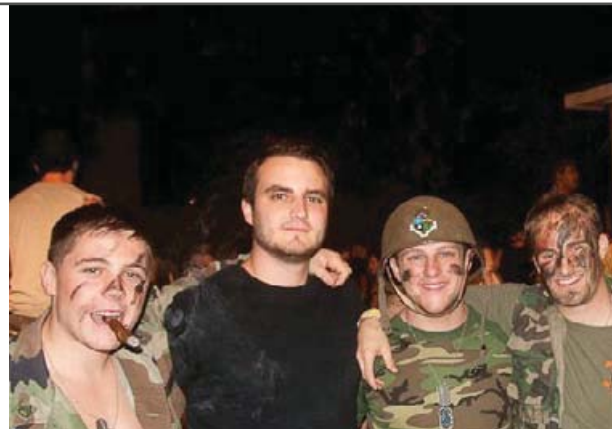
AWARDS & FUN FACTS 2012 Overall 1st Place Winners of Dance Marathon benefitting Children's Miracle Network, 2012 1st Place winners of Pi Lam's Linedance Philanthropy

CAMPUS INVOLVEMENT Golden Girls: Annemarie Younger, Carly Blythe, Katilin Tufts
Cheerleaders: Mellissa Freyre, Kelli Rivers
Batgirls: Nikki Thornhill



Delta Tau Delta (Delt) • 318 South Copeland Street
fsu-delts.com • Est. 1858

DELTA TAU DELTA WAS THE FIRST FRATERNITY on Florida State's campus. Delt is one of the most actively involved fraternities on campus, taking the initiative to encourage new members to get involved in all areas of campus life. The chapter was crowned the 2009 Greek Week winners, winning the IM championship, and Dance Marathon in 2010. Some of our annual functions include: Delt Recon, Wild Wild Delts, and a semi-formal trip to New Orleans. We pride ourselves on the fact that we are Delt Gentleman in all aspects of life and always strive for excellence. Joining a fraternity is a big decision, and we have the brotherhood that makes it easy for you.



ESTABLISHED AT FSU 1949

PRESIDENT Elliot Silverstein
(ers09d@yahoo.com)

RECRUITMENT CHAIR Nick Myers
(nickmyers120@yahoo.com)

COLORS Royal Purple & Gold

FLOWER Purple Iris

SYMBOL The Crescent Moon

MINIMUM GPA 2.5

AWARDS & FUN FACTS New Member Education Excellence 2011, Brotherhood Excellence 2011, Dance Marathon Overall Winner 2010

CAMPUS INVOLVEMENT IFC presidents: Colin O'Connor, Nico Spayde
Members of Senate: Evan O'Connor, Daniel Johns, Harrison Steg, John Clary



Delta Zeta (Dee Zee) • 749 W. Jefferson St.
dzfsu.com • Est. October 24, 1902

SINCE BECOMING A PART OF FLORIDA STATE UNIVERSITY'S GREEK COMMUNITY IN 1924, Delta Zeta has taken pride in participating in philanthropic, campus, and social activities. It is here where women are given the opportunity to grow individually, and create bonds that will last a lifetime. Delta Zeta supports its national philanthropy benefitting the speech and hearing impaired, by hosting Hamburgers for Hearing in the fall and Clay Classic in the spring semester. The sisters of Delta Zeta take part in numerous events hosted by other organizations to encourage a greater wealth of service! Delta Zetas exemplify their character through leadership roles in numerous organizations across campus including Student Government, Seminole Student Boosters, and the Student Alumni Association. Florida State is our second home, and we are proud to be a part of the Seminole family! Delta Zeta represents a strong bond of sisterhood and everlasting friendship. We hope that you are able to find the same within our Greek community. We wish you a very happy Recruitment!



ESTABLISHED AT FSU 1924

PRESIDENT Taryn Fenske (tmf10c@my.fsu.edu)

RECRUITMENT CHAIR Kali Flood
(dzrecruitment12@gmail.com)

COLORS Rose & Nile Green

FLOWER Pink Killarney Rose

SYMBOL Turtle, Diamond, Pearl

MINIMUM GPA 3.0

AWARDS & FUN FACTS Delta Zeta is one of the largest National Sororities in the U.S., with collegiate and alumni chapters in all fifty states; famous DZ's: Joy Behar, Florence Henderson, Haley Harper, and Barbara Dooley; 2010 3rd Place Homecoming Overall

CAMPUS INVOLVEMENT SGA Senate President and Student Senator, Phi Eta Sigma Exec Member, Student Boosters Exec, Light the Night Exec, SLC Exec Member, SAA Exec Member, Dance Marathon



Gamma Phi Beta (Gamma Phi) • 633 West Jefferson Street
fsugphib.com/ • Est. November 11th 1874

OUR SISTERHOOD, THE FIRST TO BE NAMED A SORORITY, was built on the ideals of the highest type of womanhood. It is here that you will have the opportunity for individual growth through academic excellence, leadership development, social enrichment, and philanthropic involvement. From FSU Golden Girls, Student Government, honors societies and community service activities, Gamma Phis are prominent on campus. Our priority is to set a principle of loving friendships. Through socials, sisterhood retreats, various campus events, and philanthropic activities, we create memories that bind us as lifelong sisters. To be a Gamma Phi Beta is to strive for excellence in all that we achieve. Shoot for the moon. Even if you miss, you will land among the stars.



ESTABLISHED AT FSU 1950

PRESIDENT Shaunnah Mahoney
(smm09d@my.fsu.edu)

RECRUITMENT CHAIR Lauren Schumacher
(las09h@my.fsu.edu)

COLORS Pink, Brown, & Mode

FLOWER Pink Carnation

SYMBOL Crescent Moon

MINIMUM GPA 2.8

AWARDS & FUN FACTS Panhellenic Academic Excellence Award of 2011, 1st Place Homecoming 2011, 3rd Place Dance Marathon 2012

The Gamma Phi Beta International Chapter Pin was designed by Tiffany & Co.

CAMPUS INVOLVEMENT Orientation Leaders, Homecoming Executive Board 2011, Dance Marathon Executive Board 2012



Iota Phi Theta (Iotas)
 Iotaphitheta.org • Est. 1963

ON SEPTEMBER 19, 1963, at Morgan State College (now Morgan State University), 12 students founded what is now the nation's fifth largest, predominately African-American social service fraternity: The Iota Phi Theta Fraternity, Incorporated. Based upon their ages, heightened responsibilities, and increased level of maturity, the fraternity's founders had a slightly different perspective than most college students. It was this perspective from which they established the fraternity's purpose, "The Development and Perpetuation of Scholarship, Leadership, Citizenship, Fidelity, and Brotherhood among Men." Additionally, they conceived the fraternity's motto, "Building a Tradition, Not Resting Upon One!" Today, Iota Phi Theta consists of over 198 chapters located in 40 States and the District of Columbia. The scope of the organization extends throughout the nation, from California to New York; from Wyoming to Florida; and from Wisconsin to The Bahama Islands.



ESTABLISHED AT FSU 2002

PRESIDENT Nick Austin
 (Nick4853@gmail.com)

RECRUITMENT CHAIR Rodney Funderburk
 (Rodneyfun@gmail.com)

COLORS Charcoal Brown & Gilded Gold

FLOWER Yellow Rose

SYMBOL Centaur

MINIMUM GPA 2.5

AWARDS & FUN FACTS Iota Phi Theta is the fifth largest and fastest growing predominantly African-American fraternity in the U.S.; Won FAMU Homecoming Stepshow and FSU Extrav stepshow in same year.

CAMPUS INVOLVEMENT Resident Assistant, Orientation Leader, Poetic Lyricism, Intramural Sports, and Honor Societies



Kappa Alpha Order (KA) • 418 West College Ave
Est. December 21st 1865

KAPPA ALPHA ORDER WAS FOUNDED DECEMBER 21, 1865 at Washington College in Lexington Virginia, which is now Washington and Lee University. Much of what we believe is modeled after our spiritual founder, Robert E. Lee. We emulate his values and promise to always be a gentleman. Lee served as president of Washington College at the time KA was founded. As President, he upheld the most important rule for students: "We have but one rule, and it is that every student must be a gentleman". Because of this, we strive to uphold the highest of standards in all aspects of life. KA prides itself on the way we give out our bids. We have a 100% bid process, which means that every single brother gets to meet and know you. This is what makes getting a bid from KA different from any other Greek organization, and what makes our brotherhood so strong. The Order provides an environment that builds strong bonds, lasting memories, and brothers for a lifetime.



ESTABLISHED AT FSU 1941

PRESIDENT Logan Opsahl
(Ka.floridastate@gmail.com)

RECRUITMENT CHAIR Kyle Sanders
(Hks09@my.fsu.edu)

COLORS Crimson & Old Gold

FLOWER Crimson Rose & Magnolia Blossom

MINIMUM GPA 2.7



KΑΨ

Kappa Alpha Psi (The Kappas)
 Kappaalphapsi1911.com • Est. January 5, 1911

KAPPA ALPHA PSI FRATERNITY, INC. was founded on Thursday, January 5, 1911 at Indiana University in Bloomington, Indiana. Ten pioneers, led by “The Dreamer” known as Elder Watson Diggs, established this grand fraternity with Achievement as our purpose and our motto of “Achievement in every field of Human Endeavor.” The five objectives of our fraternity are: 1) to unite college men of culture, patriotism, and honor in a bond of fraternity; 2) to encourage honorable achievement in every field of human endeavor; 3) to promote the spiritual, intellectual, and moral welfare of its members; 4) to assist in the aims and purpose of colleges and universities; and 5) to inspire service in the public interest.



ESTABLISHED AT FSU September 20, 1975

PRESIDENT Christian Williams
 (cw09j@my.fsu.edu)

RECRUITMENT CHAIR Richard Neunie
 (ThetaEta1975@gmail.com)

COLORS Crimson & Crème

FLOWER Red Carnation

SYMBOL Diamond

ANNUAL PHILANTHROPY St. Jude’s Research Hospital

MINIMUM GPA 2.5

AWARDS & FUN FACTS One of the largest fraternity houses in the nation, Placed Top 3 In Dance Marathon 2012

CAMPUS INVOLVEMENT Medical Association of Pre-medical Students- President, National Pan-Hellenic Council-President, Black Law Student Association- President



Kappa Alpha Theta (Theta) • 510 W Park Avenue
 fsukat.com • Est. January 27, 1870

YESTERDAY, TODAY, AND TOMORROW, Kappa Alpha Theta exists to nurture each member throughout her college and alumnae experience and to offer a lifelong opportunity for social, intellectual, and moral growth as she meets the higher and broader demands of mature life. When a new Theta sister enters through the doors, she leaves a changed person, with a socially, intellectually, and morally different view on life. The sisters of Kappa Alpha Theta are excited to open their home to new sisters that will continue the strong traditions we have worked so hard to proudly uphold.



- ESTABLISHED AT FSU** October 18th, 1924
- PRESIDENT** Jennifer Kreuzpaintner
(jfk08@my.fsu.edu)
- RECRUITMENT CHAIR** Hannah Smith
(hds09@my.fsu.edu)
- COLORS** Black & Gold
- FLOWER** Black & Gold Pansy
- SYMBOL** Kite and Twinstars
- MINIMUM GPA** 2.8
- AWARDS & FUN FACTS** Walt Disney's daughters were Thetas, 2nd in Dance Marathon 2012, 3rd place overall in sorority intramurals
- CAMPUS INVOLVEMENT** Student Government, Dance Marathon Overall, Orientation Leaders, Panhellenic Exec.



Kappa Delta (KD) • 555 West Jefferson Street
fsukappadelta.com • Est. October 23, 1897

KAPPA DELTA SORORITY is a national organization for women committed to:

- Inspiring our members to reach their full potential;
- Preparing our members for community service, active leadership and responsible citizenship;
- Creating opportunities for lifetime involvement through innovative and responsive programs, and strategic collaborations and partnerships; and
- Fostering the development of our time-honored values within the context of friendship.



ESTABLISHED AT FSU 1904

PRESIDENT Kathryn Wolter
(kaw09g@gmail.com)

RECRUITMENT CHAIR Kari Stephenson
(kks09@my.fsu.edu)

COLORS Olive Green & Pearl White

FLOWER White Rose

SYMBOL Nautilus Shell, Dagger, Katydid

MINIMUM GPA 2.6

AWARDS & FUN FACTS Kappa Delta has the 3rd highest overall Panhellenic GPA, Kappa Delta was the first sorority founded at Florida State University in 1904

CAMPUS INVOLVEMENT We encourage each of our members to participate in other organizations on campus. Such involvement includes Dance Marathon, FSU Cheerleading Team, Pi Beta Kappa Honor Society, Women in Business, Professional Golf Management and many more.

We Appreciate You



KΔΧ

Kappa Delta Chi (KDChi)
kdchifsu.com • Est. April 6, 1987

THE ALPHA SIGMA CHAPTER OF KAPPA DELTA CHI SORORITY, INC is the first service based sorority at Florida State University. Our sorority is strongly committed to promoting service and raising awareness of important issues concerning our school, the Tallahassee community and our nation as a whole. Our purpose is to promote the values of Unity, Honesty, Integrity and Leadership among women at colleges and universities. We are a non-traditional sorority full of diverse young ladies, ready and eager to make a difference; by touching lives and giving hope to as many people as possible.



ESTABLISHED AT FSU April 18th, 2009

PRESIDENT Kristen Wassmann
(alphasigma.president@kappadeltachi.org)

RECRUITMENT CHAIR Loredana Hurtado
kdchifsuexpansion@gmail.com

COLORS Pink & Maroon

FLOWER Pink Rose

SYMBOL Penguin

MINIMUM GPA 2.5

AWARDS & FUN FACTS 2009-2010 National Undergraduate Chapter of the Year Award, 2009-2010 National Philanthropic Organization of the Year

CAMPUS INVOLVEMENT Light the Night, Dance Marathon, Relay For Life



KKΓ

Kappa Kappa Gamma (Kappa) • 528 W Jefferson Street
 kappakappagamma.org • Est. October 13, 1870

KAPPA KAPPA GAMMA IS AN ORGANIZATION OF WOMEN, which seeks for every member throughout her life bonds of friendship, mutual support, opportunities for self-growth, respect for intellectual development, and an understanding of and an allegiance to positive ethical principles. Here at Kappa Kappa Gamma, we live as young women filled with grace, poise, leadership, elegance, style, and determination. Our sisterhood lasts a lifetime, extending past college life, which provides Kappas with the opportunity to learn, mature, and experience life with one another.



ESTABLISHED AT FSU 1961

PRESIDENT Michelle Hampton
 (amh09e@my.fsu.edu)

RECRUITMENT CHAIR Kaitlin Gorski
 (kmg09g@my.fsu.edu)

COLORS Light Blue & Dark Blue

FLOWER Iris

SYMBOL Owl, Key, and Fleur-di-lis

MINIMUM GPA 3.0

AWARDS & FUN FACTS 1st Place in Garnet Division Dance Marathon 2011. Relay For Life was started at FSU by a Kappa in 2004! Kate Spade, Ashley Judd, Lo Bosworth and Sophia Bush are all Kappas!

CAMPUS INVOLVEMENT Panhellenic Association, Rho Gammas, Miss. North Florida 2011, Relay for Life Executive Board, Dance Marathon Executive Board, University Ambassadors, Garnet and Gold Guides



Kappa Sigma (Kappa Sig) • 1912 Heritage Grove Circle
kappasigma.org • Est. 1869

AT THE HEART OF KAPPA SIGMA lie the Fraternity's Four Pillars, which guide our ambitions and underpin our successes. Striving for excellence in Fellowship, Leadership, Scholarship and Service produces Brothers who are involved in all aspects of campus life; who excel academically as students and professionally upon graduation; who develop lifelong bonds with those around them and who support those peers; and who serve their colleges and communities. Becoming a Kappa Sigma provides the framework to build yourself into the man you want to be.



ESTABLISHED AT FSU June 10, 1951
PRESIDENT Robin Bailey (rdb10@my.fsu.edu)
RECRUITMENT CHAIR Grant Wagstaff (jgw10c@my.fsu.edu)
COLORS Scarlet, White, and Emerald Green
FLOWER Lily of the Valley
SYMBOL The Star and Crescent
MINIMUM GPA 2.5
AWARDS & FUN FACTS 2009 Homecoming Champions, 2010 Homecoming Champions, Largest Pledge Class on Campus Fall 2010
CAMPUS INVOLVEMENT Interfraternity Council Executive Board, SGA Student Senate, SGA Executive Cabinet, Relay for Life Executive Board, Homecoming Chief



Lambda Tau Omega (LTO)
lambdatauomega.org • Est. October 9, 1988

IN 1988, sixteen resilient women of Montclair State University (formerly Montclair State College), in Upper Montclair, NJ, sought to provide women campus wide with an element that prided itself on the prism of ethnic, political, and religious backgrounds reflected throughout their university. Together, these women created a sisterhood where each women contributed a unique persona to learn and build from by coming together as one. Thus, the mermaids of Lambda Tau Omega Sorority, Inc. were born. The sisters of the Prysmatic Mu Chapter of Lambda Tau Omega first began their journey into the royal blue seas in the spring of 2003, when a group of women from Florida State University came together for a common cause: to provide a sisterhood founded on the embrace of unity of diversity and advocacy to other women campus wide.



ESTABLISHED AT FSU 2003
PRESIDENT Courtney Chipman
(ltomu.pres@yahoo.com)
RECRUITMENT CHAIR
lto.recruitment@gmail.com
COLORS Royal Blue & Light Gray
SYMBOL Enchanting Mermaid
MINIMUM GPA 2.5
AWARDS & FUN FACTS Highest GPA 2011-2012, Academic Honorable Mentions
Step, Stroll, and Call, Multicultural Based
CAMPUS INVOLVEMENT CSA, Conduct Board, Resident Assistant, Black Student Union, Student Publications



Lambda Theta Alpha (LTA) • A4100 University Center
sga.fsu.edu/organizations/lta/ Est. Dec. 1975

THE YEAR 1975 SAW THE BIRTH OF WHAT STARTED AS A VISION, an idea of an organization, a sisterhood that would cater to the needs of Latinas and the universal woman. Thanks to the tremendous strides made by our 17 founding mothers, this dream was realized, and took form as the entity Lambda Theta Alpha Latin Sorority, Incorporated, the first Latina sorority in the nation. The purpose of Lambda Theta Alpha is to provide a sisterhood based on Unity, Love, & Respect. To develop strong leaders who will then provide and practice political, social and cultural activities. To promote Latino Unity through charitable and educational programs. To maintain a high standard of learning and serve as a voice for all Latino students. Saluting is a tradition unique to Lambda Theta Alpha Latin Sorority, Inc. Saluting is a means by which members of an organization can praise a particular member within their organization or honor the organization's past and current accomplishments. Saluting symbolizes unity and respect.



ESTABLISHED AT FSU May 2001

PRESIDENT Diana Salazar
(lta_gepresident@yahoo.com)

RECRUITMENT CHAIR Jacqueline Torres
(lta_orientationadvisor@yahoo.com)

COLORS Burgandy & Gray

SYMBOL Perla, Concha, Lady on the moon, crescent moon, palma

ANNUAL PHILANTHROPY St. Jude's Research Hospital

MINIMUM GPA 2.5

AWARDS & FUN FACTS Overall MGC Organization of the Year; MGC Perfect attendance award; woman of the year; Citizenship Award; Leadership Education Award; Chapter Excellence Awards

CAMPUS INVOLVEMENT Community Service and philanthropy, Hispanic Latino Student Union



Lambda Theta Phi (Lambdas) • A303 Oglesby Student Union
lambda1975.org • Est. December 1, 1975

IN 1975, there were no Latino fraternities in existence in the United States. Lambda's founders, as men of vision, realized there was a need to unite the Latino students, develop their leadership skills, impart upon them the value of an education, and instill in them a commitment to their community and culture. Hence, Latino unity and brotherhood would be achieved through a long recognized institution – the fraternity. The newest addition to the Greek system would be the first in the nation, by identity and by name: Lambda Theta Phi Latin Fraternity, Incorporated. The ideals of our fraternity include academic excellence, brotherhood, leadership, Latino unity, and service. At the undergraduate level, our brothers are active within the Fraternity and in other student organizations. At the professional level, among our ranks you will find attorneys, doctors, and engineers. Our brothers are affecting policy and change as elected officials serving on City Councils, Boards of Education, U.S. House of Representatives, and the U.S. Senate. In short, Lambdas are contributing and excelling in every facet of human endeavor.



ESTABLISHED AT FSU October 29, 2000

PRESIDENT Gerardo Cruz
(president.lambdas@gmail.com)

RECRUITMENT CHAIR Andres Ramirez
(induction.lambdas@gmail.com)

COLORS Brown & White

FLOWER White Carnation

SYMBOL The Conquistador

ANNUAL PHILANTHROPY American Heart Association

MINIMUM GPA 2.75

AWARDS & FUN FACTS Multicultural Greek Council Presidents Cup 2011, Hispanic Latino Student Union Affiliate of the Year 2010-2011, One of our brothers, Robert "Bob" Menendez, is the Junior Senator from New Jersey.

CAMPUS INVOLVEMENT Student Government Association, Hispanic Latino Student Union, Puerto Rican Student Association



Omega Phi Beta (OPB) • A305 Oglesby Union
OmegaPhiBeta.org • Est. March 15, 1989

OMEGA PHI BETA WAS FOUNDED ON MARCH 15, 1989 as a nonprofit organization in the State of New York. Our membership is comprised of women from various ancestries throughout the world including Latin America, the Caribbean, and parts of Africa, Europe and Asia. Our diversity is not only limited to our ethnicity, but also include the various characteristics and talents we bring as individuals in order to make Omega Phi Beta successful. The purpose of Omega Phi Beta is to serve and educate people of diverse backgrounds through sisterhood, leadership, and guidance. As positive role models, we promote unity of all cultures, focus on the empowerment of our gender, and raise the standards of excellence in our academic, social, and personal endeavors.



ESTABLISHED AT FSU April 7, 2010

PRESIDENT Maria Silva
(president.opb.bz@gmail.com)

RECRUITMENT CHAIR
membership.opb.bz@gmail.com

COLORS Black, Forest Green, Gold

FLOWER Sunflower

SYMBOL Hummingbird

ANNUAL PHILANTHROPY Human Trafficking

MINIMUM GPA 2.75

AWARDS & FUN FACTS Greek Awards in Philanthropy Excellence and Community Service Excellence

CAMPUS INVOLVEMENT Hispanic Latino Student Union, Undergraduate Art History Association, Puerto Rican Student Association



WESTCOTT BUILDING
RUBY DIAMOND AUDITORIUM



Phi Beta Sigma (The Sigmas) • P.O. Box 20166
FSUSigmas.com • Est. January 9th, 1914

THE PHI BETA SIGMA FRATERNITY, INC. was founded at Howard University in Washington, D.C., January 9, 1914, by three young African-American male students: Honorable A. Langston Taylor, Honorable Leonard F. Morse, and Honorable Charles I. Brown. The Mighty Mu Epsilon Chapter of Phi Beta Sigma Fraternity, Inc was chartered on March 7, 1980 by Bro. Kenneth "KC" Colebrooke and Maurice Parris. Since being on the campus of Florida State University for over 30 years, we have indulged in all aspects of the Tallahassee Community.



ESTABLISHED AT FSU December 7, 1979
PRESIDENT Jahreil Bonner
RECRUITMENT CHAIR Timothy Edwards
(tae09@my.fsu.edu)
COLORS Royal Blue & Pure White
FLOWER White Carnation
SYMBOL Dove
MINIMUM GPA 2.5
AWARDS & FUN FACTS The Mu Epsilon Chapter of Phi Beta Sigma is known as the "Legendary Step Chapter" within the State of Florida, The Mu Epsilon Chapter of Phi Beta Sigma Fraternity, Inc. has been invited to major step show such as Florida Invitational Step Show (Fiss) and others.
CAMPUS INVOLVEMENT HIV/AIDS Awareness Block Party, Soul Santa, Splish Splash for Kids



Phi Delta Theta (Phi Delt) • 1940 Heritage Grove Circle
PhiDeltaTheta.org • Est. December 26, 1848

THE GAMMA CHAPTER OF PHI DELTA THETA, was founded at Florida State University in 1951 under the principles of friendship, sound learning, and moral rectitude. The goal of Phi Delta Theta is to cultivate an atmosphere in which young men can grow into leaders in their communities. Members of Phi Delta Theta enjoy all that Florida State University has to offer, both academically and socially. Nationally, Phi Delta Theta has produced politicians, astronauts, athletes, and CEO's.



ESTABLISHED AT FSU 1951

PRESIDENT Anthony Campana
(AnthonyCampanafsu@gmail.com)

RECRUITMENT CHAIR Cameron Katz
(katzcameron@gmail.com)

COLORS Azure & Argent

FLOWER White Carnation

SYMBOL Coat of Arms

MINIMUM GPA 2.5

AWARDS & FUN FACTS One of the Largest Fraternity Houses in the Nation, Placed Top 3 In Dance Marathon 2012

CAMPUS INVOLVEMENT Host the annual Karaoke Palooza philanthropy for the ALS



ΦΙΑ

Phi Iota Alpha (Phiotas)
fsuphiotas.com • Est. December 26, 1931

THIS FRATERNITY WAS FOUNDED with the goal of Pan-Americanism or the unification of Latin America via the empowerment of the Latino community by providing intensive social and cultural programming that promote the appreciation of Latino culture and heritage. Our emphasis is to create a brotherhood that serves as a support network for young men to become leaders in our community.



- ESTABLISHED AT FSU** April 19, 2008
- PRESIDENT** Alex Victoria
(president@fsuphiotas.com)
- RECRUITMENT CHAIR** Gilberto Parada
(sensato@fsuphiotas.com)
- COLORS** Gold, Navy Blue, Red & White
- FLOWER** Red Carnation
- SYMBOL** Lion, Map of Latin America, Pillars
- MINIMUM GPA** 3.0
- AWARDS & FUN FACTS** Artes Award 2011, Vires Award 2012, Greek Awards Night 2012: Chapter Excellence in Campus Involvement, Philanthropy, Greek Relations, and Academics
- CAMPUS INVOLVEMENT** Hispanic/Latino Student Union, Multicultural Greek Council, Student Government Association



Phi Kappa Psi • 1920 Heritage Grove
fsuphipsi.com • Est. February 19th, 1852

BY CHOOSING TO BECOME A MEMBER OF THE PHI KAPPA PSI FRATERNITY, you have the opportunity to become a renaissance man and a well-rounded individual. As members of Phi Kappa Psi, we place high importance in scholarship, leadership, athleticism, and chivalry. We are a brotherhood of men who are capable of socially, academically and personally balancing their lives. Becoming a Phi Psi is choosing a brotherhood that will be there for you the rest of your life. You will accumulate a wealth of unforgettable memories that you and your new brothers will cherish for the rest of your lives. Currently, we are looking for members that can contribute to Phi Kappa Psi's excellence and respectable foundations. We believe that every man has a plethora of individual talents and a uniqueness that is key to any organization's success.



ESTABLISHED AT FSU December 9th, 1962

PRESIDENT Steven McMahon
(stm09c@my.fsu.edu)

RECRUITMENT CHAIR Brandon Angelone
(bea09@my.fsu.edu)

COLORS Cardinal Red & Hunter Green

FLOWER Jacqueminot Rose

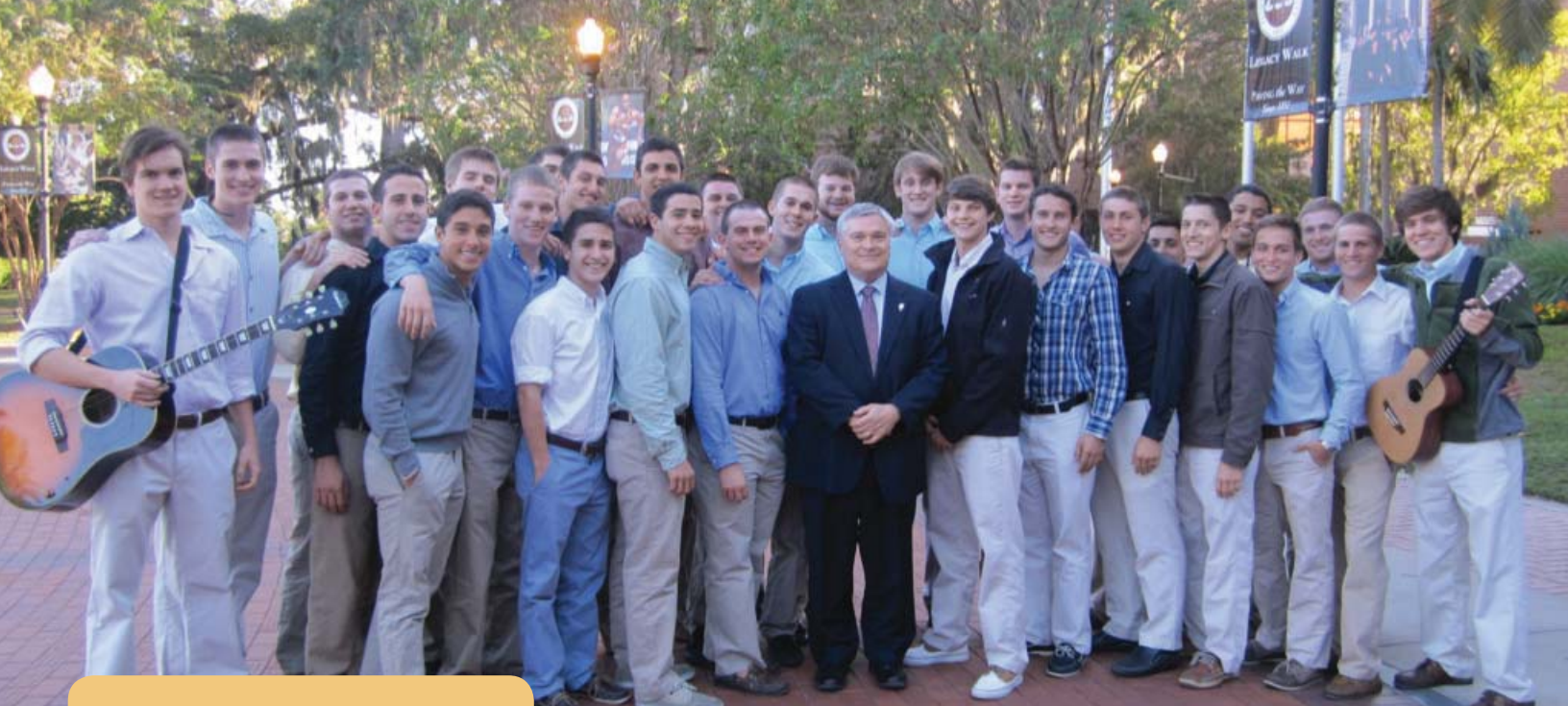
SYMBOL Lamp

ANNUAL PHILANTHROPY The Boys and Girls Club of America

MINIMUM GPA 2.5

AWARDS & FUN FACTS 2010 Homecoming 1st Place, 2010 IM Football runner-ups

CAMPUS INVOLVEMENT Student Boosters, Student Alumni Association, Asian American Student Union



ΦΚΤ

Phi Kappa Tau (Phi Tau) • 1900 Heritage Grove Circle
 PhiKappaTau.org • Est. March 17, 1906

THE MISSION OF PHI KAPPA TAU is to champion a lifelong commitment to brotherhood, learning, ethical leadership and exemplary character. Phi Kappa Tau pushes forward into a new decade as an organization truly committed to excellence, as well as creating the true, fully rounded Fraternity Man. The Beta Iota Chapter of Phi Kappa Tau offers the complete fraternal experience at Florida State University with brothers involved in every facet of campus life. From Student Government, to FSU football, Phi Kappa Tau prides itself on its dedication to involvement. Phi Kappa Tau has a strong commitment to academic excellence, unblemished character, and above all else, brotherhood. Phi Kappa Tau prides itself on being the strongest, most diverse, and successful here at Florida State University. We are an ever growing, ever changing, ever expanding fraternity that will never step down from a challenge. Those Who Stay Will Be Champions.



- ESTABLISHED AT FSU** March 5, 1949
- PRESIDENT** Eric Mello (ejm09g@my.fsu.edu)
- RECRUITMENT CHAIR** Zack Ernst (zwe10@my.fsu.edu)
- COLORS** Harvard Red & Old Gold
- FLOWER** Red Carnation
- MINIMUM GPA** 2.6
- AWARDS & FUN FACTS** Campus Involvement Excellence, New Member of the Year, IFC Man of the Year
- CAMPUS INVOLVEMENT** Dance Marathon Exec., Premed Society, Student Boosters



Phi Mu • 823 W. Jefferson St.
fsu.phimu.org • Est. March 4, 1852

NEARLY 160 YEARS AGO, three young women came together to create an organization that would uphold the ideals of Love, Honor, and Truth. These very words are etched in the hearts of Phi Mu sisters across the nation and are essential to true friendship. Phi Mu has continued to stand out through our dedication to philanthropy, scholarship, and the Florida State Community. Our sisters shine as leaders not only within our sorority, but also through their involvement with Student Government, FSU baseball bat girls, Order of Omega, and more. Although we like to keep busy with our involvement, Phi Mu ladies still know how to have fun! Our softball tournament, Grandslam, is our annual fundraiser for Children’s Miracle Network and is considered a favorite among FSU fraternities. In addition, we have socials, date functions, and the Phi Mu Carnation Ball once a year. But between socials, formals, philanthropies, and retreats, it is the lasting friendships and incredible memories that best represent our sisterhood. We hope that you are able to find your home during Recruitment, and that you will come to understand what sisterhood truly means, as we have been so fortunate to realize at Phi Mu.



ESTABLISHED AT FSU January 26, 1929

PRESIDENT Katie Nusbickel
(kpn09c@my.fsu.edu)

RECRUITMENT CHAIR Brie Levy
(bllc09c@my.fsu.edu)

COLORS Pink & White

FLOWER Rose Colored Carnation

SYMBOL Quatrefoil

MINIMUM GPA 2.75

AWARDS & FUN FACTS 3rd in Pi Lambda Phi Line Dance, 2nd in Theta Chi’s Cheers for Children, 3rd in Order of Omega’s Greek Week

CAMPUS INVOLVEMENT Panhellenic Executive Board, Student Government Association Executive Board, Dance Marathon Overall Executive Board



ΦΣΚ

Phi Sigma Kappa (Phi Sig) • 447 West College Ave.
phisigmakappa.org • Est. March 15, 1873

PHI SIGMA KAPPA is a lifelong brotherhood dedicated to the betterment of the individual, the university community, and our world, by giving its members opportunities to develop leadership skills, participate in service to others, achieve academic excellence, experience cultural diversity and practice personal integrity.



ESTABLISHED AT FSU 1990

PRESIDENT Patrick Clements
(pjc09d@my.fsu.edu)

COLORS Red & Silver

FLOWER White Tea Rose & Red Carnation

SYMBOL The Knight

MINIMUM GPA 2.5

AWARDS & FUN FACTS We continuously excel in philanthropical, intramural sporting events, and community service.

CAMPUS INVOLVEMENT Phi Sigma Kappa has numerous brothers that are campus leaders, including the Student Body President Rueben Stokes, participating as officers for clubs or by taking part in student government. Whether you want to become involved in a sports team, club, or make a difference while you are at FSU, Phi Sig is the best place to start.



Pi Beta Phi (Pi Phi) • 519 West Jefferson Street
pibetaphi.org/pibetaphi/fsu/ • Est. April 28, 1867

WITHIN PI BETA PHI, emphasis is placed on personal and developmental leadership training, academic excellence and service to others. Our goal is to cultivate sincere friendships and everlasting bonds. We are who we are because we chose and were chosen. To receive and to revere a special treasure, woven of wisdom, integrity and commitment. To accept it is our privilege, to nurture it is our goal. Our responsibility is to dedicate ourselves to the ideals and the challenge of those whose dream became our heritage. "We have never laughed so loud, cried so hard, talked so much, or been ourselves more completely since we've become Pi Beta Phi's."



ESTABLISHED AT FSU 1921

PRESIDENT Shannon Nehrigh
(Flb.chp@gmail.com)

RECRUITMENT CHAIR Cassie Sclafani
(Flb.vpm@gmail.com)

COLORS Wine & Silver Blue

FLOWER White Carnation

SYMBOL Golden Arrow

MINIMUM GPA 3.0

AWARDS & FUN FACTS Actress Faye Dunaway was a Pi Phi at Florida State University, Barbara Bush, Ann Turner Cook (first Gerber baby), Anna Lee Fisher (first mother in space), and Jennifer Garner were all Pi Phis, 2012: Office of Greek Life's Award for Philanthropic Excellence

CAMPUS INVOLVEMENT Panhellenic Executive Council, Panhellenic Cabinet, Collegiate Merchandising Association, Student Government Association



Pi Kappa Alpha (Pike) • 1952 Heritage Grove Circle
fsupikes.com • Est. March 1st, 1868

THE PI KAPPA ALPHA FRATERNITY is not looking for just ordinary men. Membership in Pi Kappa Alpha will give you the opportunity to make the most of your college experience. Perhaps the best opportunity that Pi Kappa Alpha provides is the ability to cultivate a socially superior man. Pi Kappa Alpha challenges our members to be pillars of integrity and beacons of success on campus and within the community. Pikes experience what it means to be involved and responsible individuals who promote community service, active campus involvement, excellence in athletics and high standards of academic achievement. Pike is dedicated to developing men of integrity, intellect, success, and high moral character, and to fostering a truly lifelong fraternal experience.



- ESTABLISHED AT FSU** 1949
- PRESIDENT** Austin Cole (ac08e@my.fsu.edu)
- RECRUITMENT CHAIR** Phil Doumar (Prd09@my.fsu.edu)
- COLORS** Garnet & Old Gold
- FLOWER** Lily of the Valley
- SYMBOL** Fireman
- MINIMUM GPA** 2.5

AWARDS & FUN FACTS 2011 Fraternity of the year, 2nd place in homecoming, 2nd place in Greek Week, Largest fraternity on campus, Largest Fraternity house in the nation.

CAMPUS INVOLVEMENT Back to back student body presidents, founder of Aspiring Medical Professionals and Pre-Law Society. Involved in SAA, SGA, Student Boosters, and more.

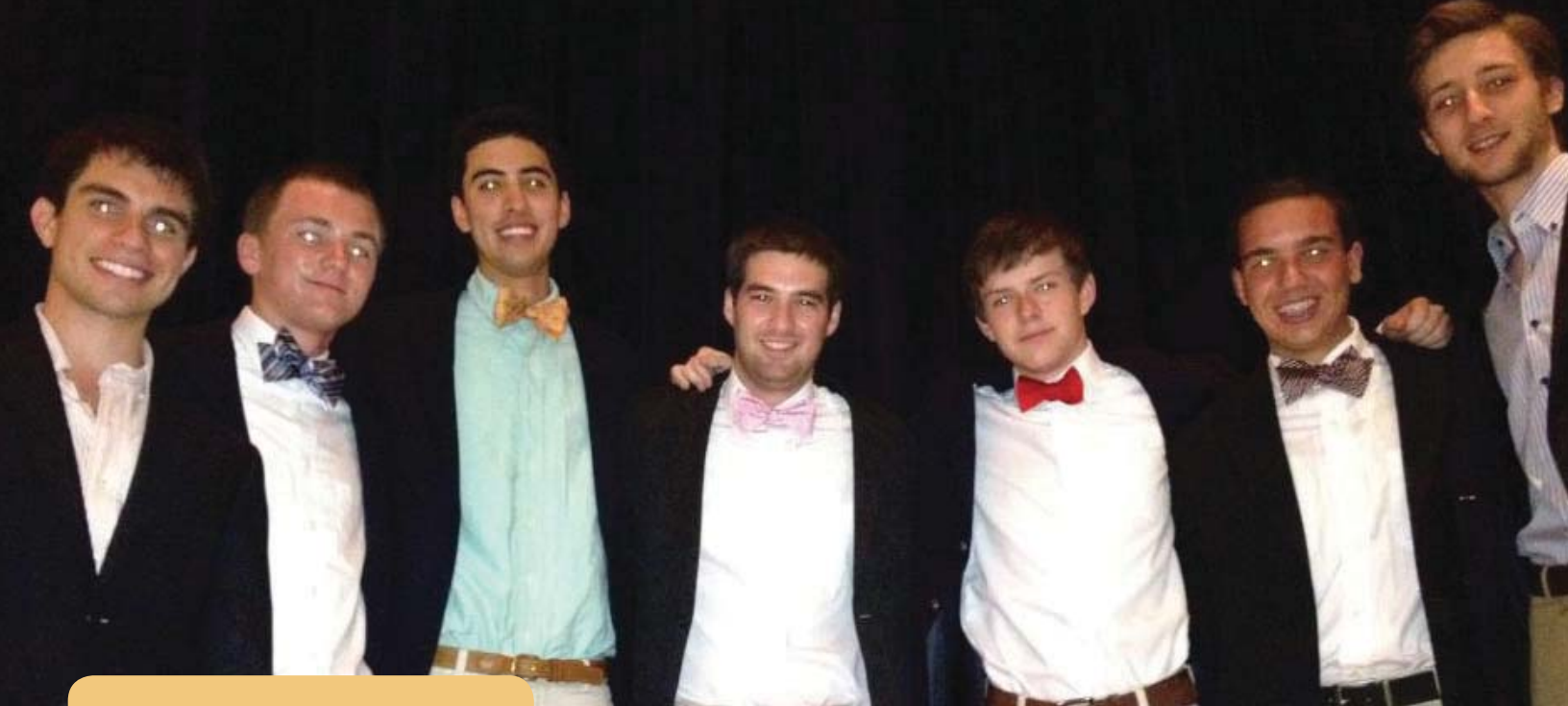


Pi Kappa Phi (Pi Kapp) • 423 W. College Ave
fsupikappaphi.com/ • Est. December 10th, 1904

PI KAPPA PHI WAS FOUNDED ON DECEMBER 10, 1904 Pi Kappa Phi was founded on December 10, 1904 at the College of Charleston in South Carolina.. As a lifelong brotherhood of leaders, Pi Kappa Phi seeks to invest in those who live their lives as men of C.L.A.S.S. –Chivalry, Loyalty, Accountability, Scholarship, and Sportsmanship. These values serve as the foundation for our new member education program, enhancing the success of both the Beta Eta Chapter of Pi Kappa Phi, as well as the brother individually. Fall rush is an exciting time for Pi Kapp, not only because we get to meet our future members, but because it gives us a chance to come together and celebrate the values and traditions that attracted us to Pi Kapp in the first place. These values and traditions are what set us apart from the rest of Florida State’s Greek organizations, and we hope that you will join us during the rush process to see for yourself.

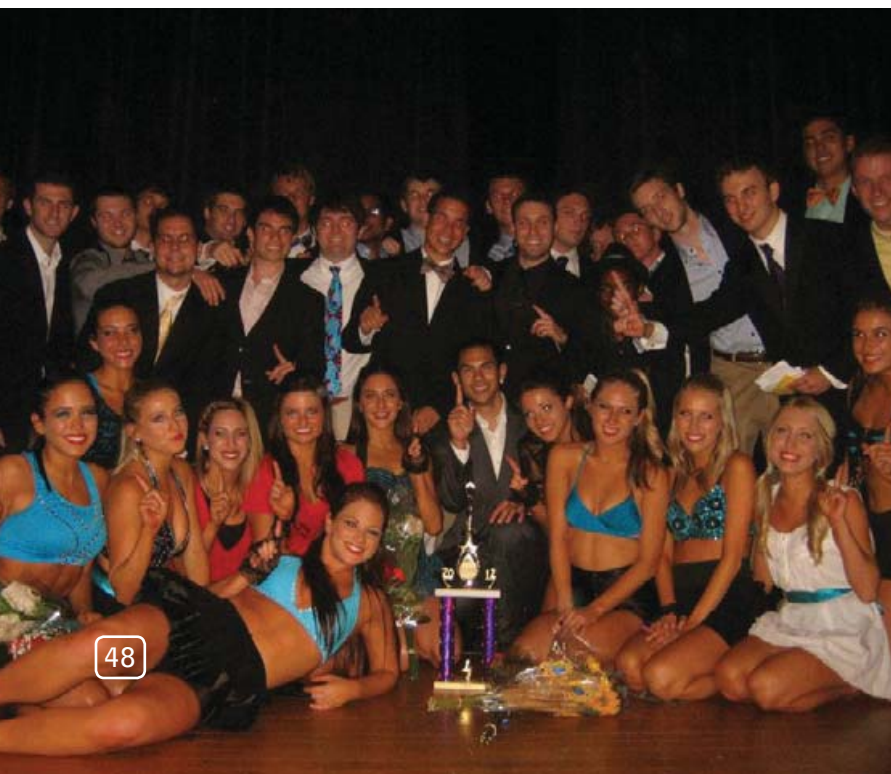


ESTABLISHED AT FSU February 18th, 1950
PRESIDENT Chris Martin (cem09s@my.fsu.edu)
RECRUITMENT CHAIR James Maloney (jmaloney1891@gmail.com)
COLORS Gold & White
FLOWER Red Rose
SYMBOL Starshield
MINIMUM GPA 2.5
AWARDS & FUN FACTS IFC Fraternity of the Year 2010-2011, IFC Greek Relations Award 2011-2012, IFC Philanthropy Award 2010-2011 and 2011-2012, IFC New Member Education Award 2010-2011
CAMPUS INVOLVEMENT IFC Exec, Orientation Leaders, Army ROTC, Student Boosters, Student Alumni Association and Student Government Association



Pi Lambda Phi (Pi Lam) • 1904 Heritage Circle
pilamfsu.org • Est. March 21, 1895

WHEN THE FOUNDING FATHERS FOUNDED THE GENTLEMEN'S COALITION IN 1995, they resolved to create a fraternity of such exceptional quality that all other fraternities would be judged against it. They succeeded beyond their wildest dreams. The Founding Fathers pursued their vision unswervingly, shrewdly harnessing the belief that they would soon be a recognized fraternity at Florida State with a diverse yet exceptional quality group of gentlemen. Their priceless legacy is a supremely elegant fraternity of rewardingly subtle complexity.



ESTABLISHED AT FSU April 6, 1996

PRESIDENT Richard Kreger
(rhk09@my.fsu.edu)

RECRUITMENT CHAIR Stefano Pérez
(sp11c@my.fsu.edu)

COLORS Purple & Gold

FLOWER Woodbine

SYMBOL Rampant Lion

MINIMUM GPA 2.75

AWARDS & FUN FACTS 2010, Pi Lambda Phi National Outstanding Community Service Award, 2008-2010; Pi Lambda Phi National Outstanding Alumni Relations Award, 2010

CAMPUS INVOLVEMENT Student Government Association, Collegiate Entrepreneurs Organization, Phi Sigma Theta



Sigma Alpha Epsilon (SAE) • 606 W Call St.
Floridastatesae.com • Est. 1856

SIGMA ALPHA EPSILON WAS FOUNDED at the University of Alabama-Tuscaloosa on March 9, 1856. SAE was the first fraternity founded in the Deep South. The Florida Beta chapter of Sigma Alpha Epsilon has a rich history here at The Florida State University. Established in 1949, the Florida Beta Chapter has pushed to excel in all campus events. Our fraternity strives to keep up the key elements of our creed, The True Gentlemen, which include Scholarship, Integrity, Friendship, and Experience. The Florida Beta Chapter strongly encourages academic and leadership success through opportunities that take on important positions early on in your college career. With over 300,000 initiated members, and countless national events including our annual leadership cruise, SAE offers its members some of the best ways to network during and after your collegiate career. The Brotherhood is not just for your years in college, but for life.



ESTABLISHED AT FSU 1949

PRESIDENT Alex McDonald
(saefbeta@gmail.com)

RECRUITMENT CHAIR Rafael Grigoryan
(rvg11f@my.fsu.edu)

COLORS Royal Purple & Old Gold

FLOWER Violet

SYMBOL Minerva, Lion, Phoenix, & Flur-de-lis

ANNUAL PHILANTHROPY SAE Open

MINIMUM GPA 2.5

AWARDS & FUN FACTS 3rd Place 2012 Dance Marathon, 3rd Place 2009 Homecoming

CAMPUS INVOLVEMENT College Republicans, Phi Eta Sigma Honor Society, FSU Student Boosters



Sigma Beta Rho (Sig Rho)
FSU.SigRho.com • Est. August 16, 1996

ALL BROTHERS STRIVE TO UPHOLD the ideals of Society, Brotherhood, and Remembrance because we believe that by doing so, our future may become a more promising one. Our pillars of Society, Brotherhood, and Remembrance were established upon the formation of the Alpha Chapter at the University of Pennsylvania in Philadelphia, on August 16, 1996. Our founders realized the unique promise of a Greek-lettered organization that instills positive values amongst its members, provides an avenue for leadership, and promotes self-betterment.



ESTABLISHED AT FSU 2005

PRESIDENT Akhil Mani
(akhil25mani@gmail.com)

COLORS Red, Black, & Green

SYMBOL King Cobra

ANNUAL PHILANTHROPY SOS Children's Village & Children's International

MINIMUM GPA 2.5

AWARDS & FUN FACTS Associate Chapter

CAMPUS INVOLVEMENT Multi-Cultural Greek Council, Big Event, Asian-American Student Union



ΣΧ

Sigma Chi (Sigs) • 503 West Park Avenue
 sigmachifsu.com • Est. June 28, 1855

OUR MISSION IS TO DEVELOP values-based leaders committed to the betterment of character, campus and community. The Epsilon Zeta Chapter of Sigma Chi has been providing the Florida State community with outstanding academics and service since its founding in 1951. Our strong commitment to both Florida State University and the Tallahassee community has been locally and nationally recognized, making this chapter one of the most revered and influential on campus. Our annual philanthropy, Derby Days, supports our national philanthropy The Huntsman Cancer Institute which helps in cancer research and treatment. Chi has given its brothers the opportunity to graduate with something much more rewarding and concrete.



ESTABLISHED AT FSU 1951

PRESIDENT Eric Apple (eka10.ea@gmail.com)

RECRUITMENT CHAIR Michael Cavallaro
 (mac10n@my.fsu.edu)

COLORS Blue & Old Gold

FLOWER White Rose

SYMBOL White Cross

MINIMUM GPA 2.5

AWARDS & FUN FACTS Sigma Chi is the largest fraternity with over 240 active chapters; Famous Sigma Chi's are Brad Pitt, John Wayne, David Letterman, Drew Brees; 2010 Philanthropy of the Year

CAMPUS INVOLVEMENT Student Conduct Board, Seminole Student Boosters, Student Alumni Association, Dance Marathon, Service Scholar, Scalphunters, Pre-Dental Society, Student Leadership Council, Financial Management Association



ΣΔΤ

Sigma Delta Tau (Sig Delt) • 833 West Jefferson Street
fsusigdelt.org • Est. March 25th, 1917

Founded at the prestigious Cornell University, Sigma Delta Tau is a life-long sisterhood. Our mission is to enrich the college experience of women of similar ideals, to build lasting friendships, and to foster personal growth. Sig Delt helps each member reach her fullest potential by providing scholastic, philanthropic, leadership, and social opportunities. Our sorority strives to uphold the ideals of our founders while bettering our college experience and the community. While our sisters are highly involved on campus, above all, they embody the values and morals of Sigma Delta Tau. The bonds of our sisterhood are endless and we are so lucky to have found a home away from home at Sigma Delta Tau..



ESTABLISHED AT FSU October 30th, 2004

PRESIDENT Ilana Weinstein
(iaw10c@myfsu.edu)

RECRUITMENT CHAIR Nicole Ressler
(nlr09d@my.fsu.edu)

COLORS Cafe au Lait & Old Blue

FLOWER The Yellow Tea Rose

SYMBOL The Torch

MINIMUM GPA 2.5

AWARDS & FUN FACTS 1st Place in Greek Week 2012, Ranked 3rd in Panhellenic GPA, Giuliana Rancic of E! News is a Sig Delt.

CAMPUS INVOLVEMENT Golden Girls, Recruitment Staff, Homecoming Executive Board, 2011 Panhellenic Executive Board, Order of Omega Executive Board, and Student Government Association



Sigma Gamma Rho (SGRho) • University Center A, Suite 4100
EDSGRHO.org • Est. November 12, 1922

SIGMA GAMMA RHO SORORITY'S AIM is to enhance the quality of life within the community. Public service, leadership development, and the education of youth are the hallmark of the organization's programs and activities. Sigma Gamma Rho addresses concerns that impact society educationally, civically, and economically.



ESTABLISHED AT FSU December 12, 1972

PRESIDENT Seymore Parker
(sp09u@my.fsu.edu)

RECRUITMENT CHAIR Asia Williams
(amw09j@my.fsu.edu)

COLORS Blue & Gold

FLOWER Yellow Tea Rose

SYMBOL Poodle

MINIMUM GPA 2.5

AWARDS & FUN FACTS Homecoming Winners 2011, Second Highest GPA in NPHC, Greek Awards 2011 Recipients

CAMPUS INVOLVEMENT Greek Week, Order of Omega, Orange St. Community Center



Sigma Iota Alpha (SIA pron. "see-ah")
Floridastatesias.com • Est. September 29, 1990

AS HERMANAS OF HERMANDAD DE SIGMA IOTA ALPHA INC., our mission is to uphold the goals set forth by our thirteen founding mothers. We pledge to formalize, cultivate, and foster bonds amongst each other as sisters and abide by respect, trust, communication, professionalism, and accountability. Our goals are: to constantly strive towards the expansion of awareness of the Latino and diverse cultures, to promote sisterhood and leadership among our members, and to serve as models of excellence in education and achievement among women. We fulfill our mission and uphold our goals through educational programming, community service, and personal development.



ESTABLISHED AT FSU October 26, 2008

PRESIDENT Emily Riquelme
(president@floridastatesias.com)

RECRUITMENT CHAIR Vitoria Medeiros
(rush@floridastatesias.com)

COLORS Red, Gold, & Royal Blue

FLOWER Red Rose

SYMBOL Unicorn & Pegasus

MINIMUM GPA 2.5

AWARDS & FUN FACTS SIA has four founding schools: SUNY Albany, SUNY New Paltz, SUNY Stony Brook, and Rensselaer Polytechnic Institute



Sigma Lambda Beta (Betas)
fsubetas.com • Est. April 4, 1986

SIGMA LAMBDA BETA INTERNATIONAL FRATERNITY, INC. is a Latino-based Multicultural Fraternity and is the largest fraternity of its kind. A derivative of 18 founding fathers, our internationally recognized fraternity values brotherhood, scholarship, leadership, community service and cultural awareness to the utmost power. With a vision unlike any other fraternity, our fraternity places emphasis on both leadership and diversity not just at FSU, but in the Tallahassee community as a whole.



ESTABLISHED AT FSU May 8, 1997

PRESIDENT Carlos Sepulveda
(cms11u@my.fsu.edu)

COLORS Royal Purple & Pure White

FLOWER Red Carnation

SYMBOL Crest & White Mustang

MINIMUM GPA 2.5

AWARDS & FUN FACTS First Latino-Based/
Multicultural Greek Organization at FSU,
Founder and Active Entity of the Multicultural
Greek Council, Two-Time National Step
Competition Champion

CAMPUS INVOLVEMENT Adopt-A-Street,
Hispanic/Latino Student Union, Multicultural
Greek Council



Sigma Nu • 530 W. College Avenue
Sigmanu.org • Est. January 1,1869

ESTABLISHED IN 1869 AT VIRGINIA MILITARY INSTITUTE, SIGMA

NU was founded on the principles of Love, Honor, and Truth. Our brotherhood focuses on building lasting friendships while encouraging all members to “Excel with Honor”. We pride ourselves on being true gentlemen. Located at 530 W. College Ave., we are a short walk from most classrooms and campus life. Notable Sigma Nu Alumni include FSU’s own Dick Howser, as well as Eli Manning, Bob Barker, Paul Rudd, Jeramiah Beam, Charles Schwab, Jon Hamm, Paul “Bear” Bryant, and Harrison Ford.



ESTABLISHED AT FSU April 22, 1950

PRESIDENT Andrew Kelly
(apk09c@my.fsu.edu)

RECRUITMENT CHAIR Chris Baude
(ctb09@my.fsu.edu)

COLORS Black & Gold

FLOWER Wild English Florabunda

SYMBOL Serpent

MINIMUM GPA 2.5

AWARDS & FUN FACTS '05 Homecoming
Champions, '04 & '06 Dance Marathon
Champions, '01-'04 Pi Phi All Frat Revue 1st
place



Sigma Phi Epsilon (Sig Ep) • 1916 Heritage Grove Circle
 sigep.org • Est. 1901

SIGMA PHI EPSILON has a long history of excellence that dates back to our founding at FSU on May 6th, 1950. We are a non-pledging Fraternity; everyone is an equal in our brotherhood. We pride ourselves on building balanced men and readying our members for a smooth transition into the corporate world following their years at Florida State University. We recruit by our core principles of virtue, diligence, and brotherly love. Our fraternity offers a Balanced Man Scholarship to all incoming freshmen, regardless of whether or not they decide to join our Fraternity. Here at SigEp we are committed to building an everlasting brotherhood as well as bettering the community around us.



ESTABLISHED AT FSU 1950

PRESIDENT Andrew Bilingsley
 (abb10f@fsu.edu)

RECRUITMENT CHAIR Eric Naisbitt
 (ewn10@fsu.edu)

COLORS Royal Purple, Dark Red, Gold Accent

FLOWER Violet & Dark Red Rose

MINIMUM GPA 3.0

AWARDS & FUN FACTS 2010 Highest Fraternity GPA, Student Government Representatives (SGA), Recipient of United States Gold Congressional Medal

CAMPUS INVOLVEMENT President Barron's Veterans' Center Advisory Board, Co-Chair of the Student Veteran Film Festival, Columnists for FSView, Florida Flambeau, Miami Heat Insider, and Noles247



Sigma Pi • 324 W. College Avenue
sigmapi.org • Est. February 26th, 1897

THE ETA EPSILON CHAPTER OF SIGMA PI is one of the newest fraternities at Florida State University. Originally founded at FSU in 1988, Sigma Pi was newly re-colonized in February 2007 and re-chartered in March 2008. Upon being accepted into Sigma Pi, you will be joining a strong brotherhood of elite Greek men. Brothers of Sigma Pi uphold the timeless values of Truth, Justice, Scholarship, and Chivalry. With the assistance of the Fraternity and the ambition that young men in Sigma Pi hold, we hope that every member of Sigma Pi gains the utmost from not only this Fraternity, but also from his college experience. Through it all, we find not only friends, but brothers who will



- ESTABLISHED AT FSU** 2007
- PRESIDENT** Kevin Moore (kkm09@my.fsu.edu)
- RECRUITMENT CHAIR** Andrew Smith (ams09aa@my.fsu.edu)
- COLORS** Lavender, White, & Gold
- FLOWER** Lavender Orchid
- SYMBOL** Owl
- MINIMUM GPA** 2.75
- CAMPUS INVOLVEMENT** Sigma Pi Bake-Off, Sigma Pi's Altruistic Campus Experience ACE Project, and Sigma Pi's 5K with Noles for Haiti



TKE

Tau Kappa Epsilon • 1939 Heritage Grove Circle
 fsutke.org • Est. January 10, 1899

TAU KAPPA EPSILON IS PROUD to be the world's largest fraternity with over 280 chapters and 250,000 men initiated. Teke boasts some of the most distinguished alumni including President Ronald Reagan, hotel mogul Conrad Hilton and Elvis Presley. At Florida State University, TKE is highly involved on campus socially, academically and athletically. "The choice to belong, the challenge to become" is a motto of our brotherhood. Since our founding at FSU in 1968, many quality men have chosen to meet that challenge and call TKE home. Size, strong brotherhood, and motivation make Tau Kappa Epsilon's future at Florida State a promising one.



- ESTABLISHED AT FSU** 2003
- COLORS** Cherry & Gray
- FLOWER** Red Carnation
- SYMBOL** Equilateral Triangle
- ANNUAL PHILANTHROPY** St. Jude Children's Research Hospital
- MINIMUM GPA** 2.5
- AWARDS & FUN FACTS** Dance Marathon 2011, 3rd Place; 2007 International Top TKE Chapter
- CAMPUS INVOLVEMENT** Dance Marathon, Relay for Life, Light the Night, Intramural Sports



Theta Chi • 1908 Heritage Grove Circle
Fsuthetachi.com • Est. April 10, 1856

SINCE ITS CREATION IN 1856, Theta Chi Fraternity has held itself to the highest standard of excellence. A gentleman of Theta Chi is a model to all he encounters. Theta Chi prides itself on a brotherhood that is diverse. Joining Theta Chi will provide you with a network of brothers that are there for life. We take pride in the positive things that we do on campus, and will continue to raise the bar for all of Greek Life. The brothers of Theta Chi are leaders in the classroom (being top 3 for the past 3 years in all fraternity GPA's), on the intramural fields (back to back gold division flag football championships), in the community (with over 2500 community service hours done in the past year), and on campus (varsity athletics, office of orientation, SGA, honor societies, and sports clubs). By being leaders on campus, we allow ourselves many avenues, to better our school, our fraternity, and ourselves.



ESTABLISHED AT FSU March 5, 1949

PRESIDENT Thomas Sisco
(Tjs09h@my.fsu.edu)

RECRUITMENT CHAIR Robby McVie
(Rdm09d@my.fsu.edu)

COLORS Military Red & White

FLOWER Red Carnation

SYMBOL Rattlesnake

MINIMUM GPA 2.75

AWARDS & FUN FACTS Highest GPA, Back to Back Presidents of the Year, Homecoming Chief

CAMPUS INVOLVEMENT Student Senate, Seminole Student Boosters Exec, Homecoming Exec, Dance Marathon Exec



Theta Nu Xi (Theta Nu)
 fsuthetawomen.com • Est. April 11, 1997

THE LAMBDA CHAPTER OF THETA NU XI MULTICULTURAL SORORITY was established at FSU on July 28, 2001. Our mission is to promote leadership, multiculturalism, and self-improvement through academic excellence, involvement and service to the campus and community; as well as being living examples sisterhood across different races, cultures, religions, backgrounds and lifestyles.



- ESTABLISHED AT FSU** 2001
- COLORS** Lavender, Carolina Blue, Black
- FLOWER** Sterling Silver Rose
- SYMBOL** Tiger Swallowtail Butterfly
- ANNUAL PHILANTHROPY** Girls For A Change
- MINIMUM GPA** 2.5
- AWARDS & FUN FACTS** FSU Greek Awards, 2009, MGC President's Cup, Chapter of the Year, MGC
- CAMPUS INVOLVEMENT** FSU Homecoming, Dance, Marathon, Light The Night, Big Event, Relay For Life



ZBT

Zeta Beta Tau (Zeebs) • 1944 Heritage Grove Circle
 ZBTFSU.com • Est. December 29th, 1898

THE MISSION OF ZETA BETA TAU FRATERNITY is to foster and develop in its membership the tenets of its Credo: intellectual awareness, social responsibility, integrity and brotherly love. The Zeta Beta Tau brotherhood is some 140,000 members strong and ZBT chapters and colonies are flourishing throughout the United States, Canada, and United Kingdom. Zeta Beta Tau has been in the forefront in pioneering new concepts — as evidenced by its very founding, the elimination of pledging membership practices, and ability to solve enormous problems when others had abandoned the effort. We continue to maintain a tradition of leadership and respect in the interfraternity world.



ESTABLISHED AT FSU 2010

PRESIDENT Josh Barrocas
 (j.barrocas@zbtfsu.com)

COLORS Medium Blue & White with Gold Trim

FLOWER Gold Carnation

SYMBOL Skull & Crossbones

MINIMUM GPA 2.5

AWARDS & FUN FACTS Intramural All-Fraternity Champion (3v3 Soccer), Division Champions (7v7 Football, Volleyball), Second Largest Fraternity House at Florida State, First Place Dance Marathon '11, Second Place '12

CAMPUS INVOLVEMENT Involved In 70+ Campus Organizations, Annual Get On The Ball Philanthropy, ZBTahiti & ZBTechno Annual Socials



ZΦB

Zeta Phi Beta (The Zetas) • P.O. Box 10048
rhokappazetas1981.org • Est. January 16, 1920

EACH YEAR WE MAKE IT OUR MISSION to go above and beyond to uphold our principles: scholarship, service, sisterly love, and finer womanhood. Each year we promote awareness of our philanthropies, the March of Dimes and Storks Nest. We hold drives to collect items for underprivileged women and host an annual baby shower for the women living in the Brehon House.



ESTABLISHED AT FSU January 8, 1981

PRESIDENT Sarah Paul
(sp10@my.fsu.edu)

RECRUITMENT CHAIR Jhenell
Matthews-Allison (jrm09k@my.fsu.edu)

COLORS Pure White & Royal Blue

FLOWER White Rose

SYMBOL Dove

MINIMUM GPA 2.5

AWARDS & FUN FACTS : First Greek-letter organization to charter a chapter in Africa (1948), First black Greek-letter organization to have a national headquarters, Stroll Off Champions 2010 and 2011

CAMPUS INVOLVEMENT Members of our chapter are involved in Student Government, BSU, DREAM, Delta Sigma Pi, SISTUHS, Inc.



ZTA

Zeta Tau Alpha (Zeta) • 514 West College Avenue
seminolezta.org • Est. October 15, 1898

THE MISSION OF ZETA TAU ALPHA is to make a difference in the lives of our members by developing the potential of each individual through visionary programming which emphasizes leadership development, service to others, academic success and continued personal growth for women with a commitment to friendship and the future based on the values and traditions of our past.



ESTABLISHED AT FSU October 15, 1898

PRESIDENT Madeleine Cuono
(mc09r@my.fsu.edu)

RECRUITMENT CHAIR Olivia Blackman
(opb09@my.fsu.edu)

COLORS Gray & Turquoise

FLOWER White Violet

SYMBOL Strawberry & Crown

MINIMUM GPA 2.7

AWARDS & FUN FACTS 2012 Intramural Sorority Champions in Soccer, multiple awards in winning other Panhellenic Philanthropies, Runner up for Line Dance 2012

CAMPUS INVOLVEMENT Many of our chapter members are involved in Honors Societies as well as leadership classes, Required to be involved in at least one outside club or activity throughout the year, Encouraged to apply for leadership positions in those clubs

INTERFRATERNITY COUNCIL

Fellow Seminoles,

On behalf of the Interfraternity Council, I would like to say welcome to The Florida State University!

Being a college student is both a challenging and rewarding experience, and you will have ample opportunities to grow as an individual and a leader during your time on Florida State's campus. With that being said, one of the best ways to ensure that you will receive the most out of these opportunities and experiences is by joining a fraternity.

The Interfraternity Council is dedicated to the academic and social development of its 23 respective fraternities and their members, and the leadership skills and training that you will attain from your fraternal experience can be carried with you for the rest of your life. Joining a fraternity will also give you the opportunity to develop an extensive network of friends and resources that will ensure your success now and throughout the rest of your college experience.

Members of Greek organizations are active in every aspect of campus, and if you are looking to expand your horizons then there is no better place to start than by joining a fraternity. Whether it's in Student Government, Order of Omega, Garnet and Gold Key Honor Society, the Seminole Student Boosters, Student United Way, or many other organizations on campus, IFC leadership is sure to be found.

While the decision to join a fraternity can be a daunting and rather intimidating task, I want to ensure you that it is decision that is certainly worth the effort. With such a diverse array of fraternities, each with its own unique qualities, I promise you that there is a perfect fit for each individual looking to join a fraternity in our council.

The IFC at Florida State University is committed to building the leaders of tomorrow each and every day on our campus, and I know that you will make a great addition to what is already a thriving Greek system. I hope that you will consider coming to check us out during Rush, and if there is ever anything that I or my council Executive Board can do to assist you please feel free to contact us.



Rush: September 4-7

In Seminole Pride, Nicco Spayde

Interfraternity Council
Florida State University

<http://fsuifc.theginsystem.com/>

MULTICULTURAL GREEK COUNCIL

Fellow Seminoles,

On behalf of all the Executive Board, the chapters, and colonies within the Multicultural Greek Council, we would like to welcome you and wish you much success in your upcoming endeavors at The Florida State University. Entering college has never been easy, but with the right transition, confidence and self-belief, anything can be done. In college so much can be offered and one of the greatest opportunities for students is to become members of the Greek Life community. The Multicultural Greek Council (MGC) works hand in hand with many different sororities and fraternities on our campus, but most importantly consists of eleven active Greek organizations.

The purpose of the MGC is to unify and organize groups that seek to promote diversity and cohesion on campus and in the community, encourage cooperation and harmony among member organizations and other organizations on campus, become active within our community, provide educational programming and service for member organizations and the student body. All of the organizations take much pride in promoting diversity and spreading cultural awareness on our campus. One of the most important factors that our council takes much pride in is helping students find that home away from home and their place on campus.

When I first arrived at FSU I had no idea there was a council with multicultural fraternities and sororities. After conducting much research and meeting various members of organizations of the Multicultural Greek Council and other councils, I decided the Multicultural Greek Council was for me. Since then I have learned many valuable lessons that will influence me for the rest of my life.

It is my sincere hope that your experience at FSU is a memorable one. You can learn more about the organizations in the Multicultural Greek Council on the Greek Life website at www.greeklife.fsu.edu. On behalf of my Executive Board, we wish you good luck and hope you have an amazing and productive year.

In Seminole Spirit,

Yohana Arias

President

Multicultural Greek Council

Christina Davis

Vice President

Multicultural Greek Council

NATIONAL PAN-HELLENIC COUNCIL

Greetings New Seminoles,

On behalf of the National Pan-Hellenic Council, we welcome you to The Florida State University. The National Pan-Hellenic Council was founded on May 10, 1930 on the campus of Howard University and established at Florida State University on July 20, 1992. Collectively known as the "Divine Nine," our council consists of the nine predominantly African-American fraternities and sororities. These organizations are committed to scholarship, community service and cultural enrichment.

The purpose of the National Pan-Hellenic Council is to create and maintain high standards in the life of fraternities and sororities and to perpetuate constructive relationships within all of our organizations. Our council also fosters an understanding of the structure and method of operation among its affiliate organizations by addressing coordinating and developing strategies on matters of mutual concern to the affiliate organizations.

If an individual is interested in joining an organization in the NPHC, most of the organizations in our council encourage men and women to observe their respective members and to educate themselves on the history and philosophies of each organization. There will be many activities throughout the year that will be sponsored by the organizations in the NPHC, thus giving an individual many opportunities to interact with the members of the council. Once a man or woman identifies the organization he/she would like to gain membership into, he/she should attend a social or interest meeting sponsored by the organization of interest. This is a formal introduction to the fraternity/sorority where an individual can meet the members and learn more about the organization's history, ideas, and membership requirements.

In the 2012-2013 school year, the National Pan-Hellenic Council is looking forward to a great year filled with exciting events and new faces on the campus of Florida State University. We happily invite you to join us in some of our most highly anticipated events including: Summer Oasis Showcase, The NPHC "Unity Week", and the "Extravaganza" Step Show. We hope you enjoy your time here at The Florida State University!!!

Sincerely,

The National Pan-Hellenic Council

PANHELLENIC ASSOCIATION

Dear Potential New Members,

On behalf of the Panhellenic Association and the Greek Community, I would like to personally welcome you to The Florida State University!

Being a college student is both a challenging and rewarding experience. During your time on Florida State's campus you will be presented with ample opportunities to grow as an individual and a leader. One very special opportunity is to become a member of a Greek organization.

When you join a sorority, you also become member of the largest and most diverse women's organization our campus has to offer, the Panhellenic Association. The Panhellenic Association is the unifying, governing and coordinating body of the 16 NPC member groups at Florida State. Serving as a liaison for sororities, other campus organizations, and administration, the Panhellenic Association is dedicated to facilitating the academic, social and philanthropic development of each sorority and their members.

From community service and philanthropic efforts to campus-wide involvement and achievements, Panhellenic women continuously make a difference at the University. Year after year, our community continues to raise hundreds of thousands of dollars to benefit sorority and fraternity philanthropies and campus-wide events such as the Dance Marathon and Relay for Life.

Panhellenic women not only pride themselves on academics, organizational leadership and philanthropic service, but also on forming lasting friendships and support systems that will live on years beyond graduation. Your involvement in a sorority and the Panhellenic Association will create the path for you to grow as an individual and prepare for life after college.

I look forward to sharing the Panhellenic experience with you!

In Panhellenic Pride,



Emily T.
President



Haley B.
VP Executive Affairs



Kayla H.
VP Finance



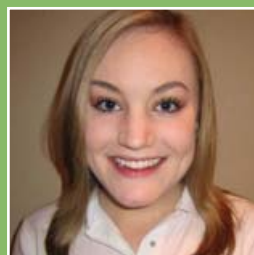
Elizabeth J.
VP Membership



Patricia F.
Assistant Membership



Christie N.
VP Programming



Andrea J.
Academic Affairs



Carla B.
VP Public Relations



Chirstina G.
VP Administrative Affairs

RECRUITMENT STAFF

I would like to be the first to welcome you to our outstanding Panhellenic Community here at the Florida State University. The Florida State Greek Community is the largest values-based organization on campus. The benefits of joining a sorority here at FSU extend far beyond the social experience. Sorority membership provides you with endless opportunities for community service, leadership development, academic excellence and lifelong friendships.

I am so grateful for the countless opportunities that Greek Life has provided me. I encourage you to participate in Recruitment with an open mind. Each of our 16 sororities has their own ritual and rich traditions; however, each one offers a meaningful history and lifelong friendships, making it a smaller piece to our larger Panhellenic community. I am so excited you are interested in becoming a part of this Panhellenic sisterhood!

Over the past year, our Recruitment Staff, Rho Gammas (Recruitment Counselors) and chapters have been diligently working to improve our Recruitment Process and make it the best it has ever been. During the spring semester the Head Rho Gammas trained over 90 fun-loving and devoted women to provide you assistance throughout Recruitment week. The Computer Analysts have spent the summer training our members in the program that handles the mutual selection process between you and the chapters. Ashley, the Assistant Vice President of Membership, and I have been working side-by-side with the Chapter Recruitment chairs, Panhellenic Executive Council, Rho Gammas, and Greek Life staff to ensure the best Recruitment week yet!

I am glad that you are interested in the rich and rewarding opportunities that Florida State's Panhellenic community has to offer. The recruitment process at FSU is one in which you seek out a chapter that matches your own values and beliefs! I encourage you to register for 2012 Recruitment and see first-hand what our exceptional Panhellenic community has to offer you.

In Panhellenic and Seminole Pride,
Elizabeth J

Vice President of Membership
fsugogreek@gmail.com

Create Character; Live your Values; Go Greek!

Recruitment Staff

Vice President of Membership- Elizabeth J.

Assistant Membership- Patricia F

Head Rho Gamma- Kenzie C.

Assistant Head Rho Gamma- Alissa E.





FLORIDA STATE UNIVERSITY OFFICE OF GREEK LIFE

The Student Government Association serves as the representative body for all students on Florida State University's campus. By serving as the direct link between the student body and the university administration, SGA is able to effectively communicate the wants and needs of all Seminoles. Controlling an \$11 million annual budget allows student government officials to impact campus life in a very profound and tangible way. SGA funds a wide array of projects that allow students to enjoy their time at Florida State to its fullest potential, while at the same time becoming well rounded citizens.