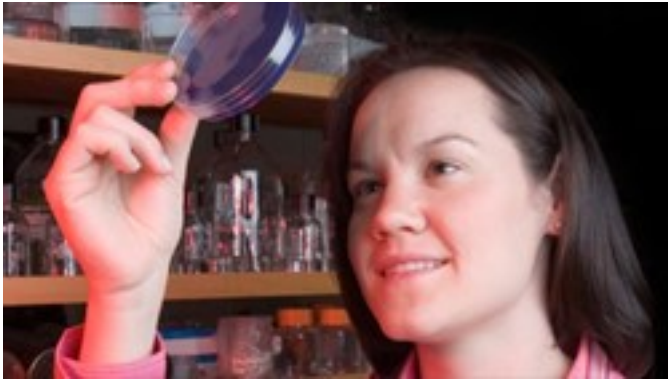


FLORIDA STATE UNIVERSITY

# FELLOWS SOCIETY



More information on the FSU Fellows Society program may be found on the Graduate School Web site located at [gradschool.fsu.edu](http://gradschool.fsu.edu).

**Questions about FSU's  
Fellows Society program  
may be directed to:**

Dr. Lisa Liseno  
Director of The Fellows Society  
The Graduate School  
[lliseno@admin.fsu.edu](mailto:lliseno@admin.fsu.edu)  
Suite 4001E  
Honors, Scholars and Fellows House  
127 Honors Way  
Tallahassee, FL 32306-1236  
(850) 645-7318  
Mail Code: 1236

314 Westcott Building  
P.O. Box 361410  
Tallahassee, FL 32306-1410  
Telephone: (850) 644-3500  
Fax: (850) 644-2969  
[gradschool@fsu.edu](mailto:gradschool@fsu.edu)

## The Graduate School

# FELLOWS SOCIETY



FLORIDA STATE  
UNIVERSITY



THE GRADUATE SCHOOL

The pin symbolizes the interwoven flames of Florida State University's three torches, *Vires*, *Artes*, and *Mores* and the pursuit to become the "completed person."



*Vires* represents strength of all kinds, physical, moral and intellectual.

*Artes* represents the attainment of knowledge which transcends skills and the appreciation of the arts.

*Mores* represents the quality of custom, character and traditions.



Membership in the Fellows Society acknowledges the achievement of these ideals of strength, knowledge and character.



Fellowship recipients are supported in reaching their utmost potential and obtaining these three ideals to become a "completed person."



The pin is a meaningful symbol of Florida State University's only graduate fellowship society, combining of the three torches into one to represent the pursuit of graduate scholars to become a "completed person."



# WHAT IS THE FELLOWS SOCIETY?

The Fellows Society was launched in 2008 as a way to bring together our outstanding graduate students who hold competitive university-wide fellowships for the purpose of interdisciplinary learning.



The mission of the Fellows Society is to recognize and advance academic excellence at the graduate level by developing leadership skills; promoting exchange and interactions among fellows from different departments; and promoting service to the University and Community.



Events are designed to expand members' intellectual horizons and to facilitate broadened networks across professions and disciplines.