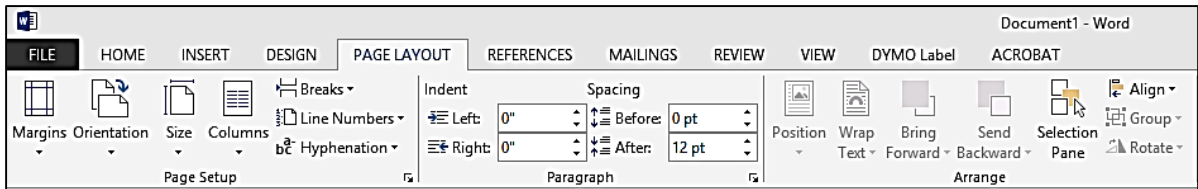
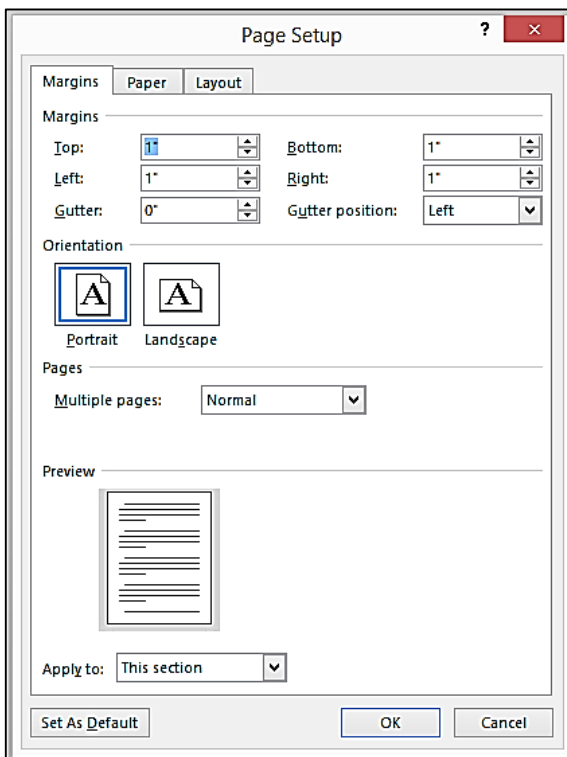
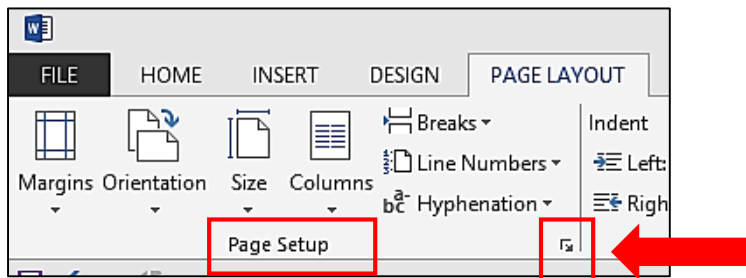


Landscape Orienting Tables and Figures in WORD

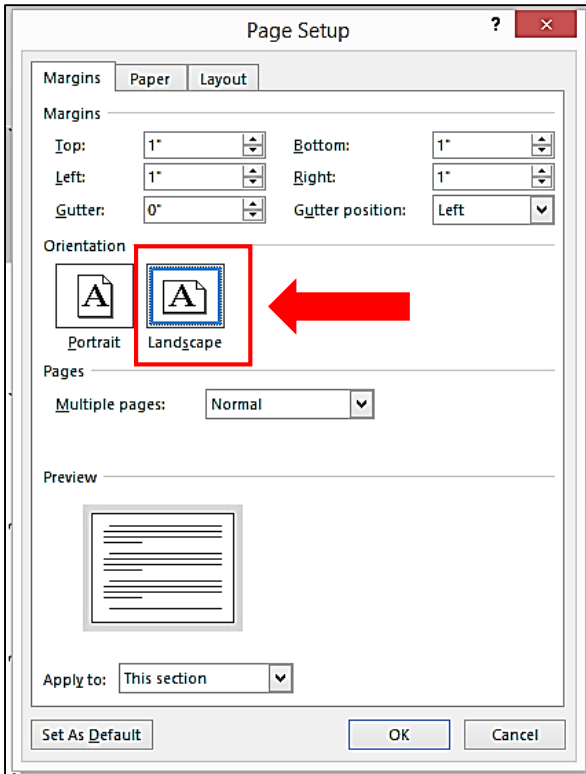
1. Highlight table(s) + heading(s) and/or figure(s) + caption(s) that you want on page(s) oriented as landscape.
2. Go to **PAGE LAYOUT** on the ribbon.



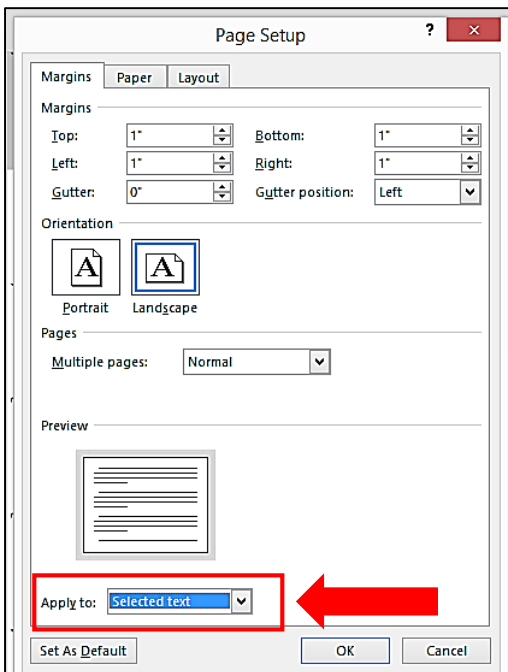
3. On **Page Setup**, click on the small arrow that points to lower right; that will open the **Page Setup** menu.



4. Under **Orientation**, click on the Landscape icon; that will highlight it in a blue box.



5. For **Apply to:** choose **Selected text**



6. Click **OK**; the highlighted table(s) + heading(s) and/or figure(s) + caption(s) will now be on landscape-oriented pages with Section Breaks inserted before and after the landscape page(s); existing page numbers should not be affected.